

# PE Anti-Human CD107a / LAMP1 (H4A3)

Catalog Number: **PE-65051**

## Basic Information

<b>Catalog Number:</b> PE-65051	<b>GenBank Accession Number:</b> BC006345	<b>Purification Method:</b> Affinity purification
<b>Concentration:</b> 100tests, 10 ul/test	<b>GeneID (NCBI):</b> 3916	<b>CloneNo.:</b> H4A3
<b>Source:</b> Mouse	<b>ENSEMBL Gene ID:</b> ENSG00000185896	<b>Recommended Dilutions:</b> IF/ICC: 1:50-1:500 FC (Intra): 10 ul per 10 <sup>6</sup> cells in 100 $\mu$ l suspension
<b>Isotype:</b> IgG1, kappa	<b>UNIPROT ID:</b> P11279	<b>Excitation/Emission maxima wavelengths:</b> 496 nm, 565 nm / 578 nm
	<b>Full Name:</b> lysosomal-associated membrane protein 1	
	<b>Calculated MW:</b> 45 kDa	

## Applications

<b>Tested Applications:</b> IF/ICC, FC (Intra)	<b>Positive Controls:</b>
<b>Species Specificity:</b> human	IF/ICC : HeLa cells, FC (Intra) : HeLa cells,

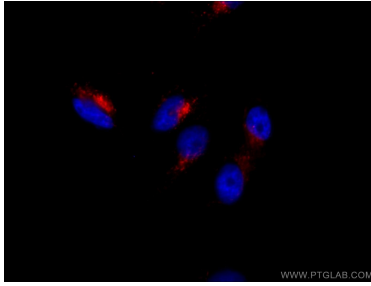
## Background Information

LAMP1 (CD107a) is a heavily glycosylated membrane protein enriched in the lysosomal membrane. LAMP1 is extensively glycosylated with asparagine-linked oligosaccharides which protect it from intracellular proteolysis (PMID: 10521503). Although LAMP1 is expressed largely in the endosome-lysosomal membrane of cells, it is also found on the plasma membrane (PMID: 16168398). Elevated LAMP1 expression at the cell surface has also been detected during platelet and granulocytic cell activation, as well as in some tumor cells (PMID: 29085473). LAMP1 functions to provide selectins with carbohydrate ligands. This protein has also been shown to be a marker of degranulation on lymphocytes such as CD8<sup>+</sup> and NK cells and may also play a role in tumor cell differentiation and metastasis (PMID: 18835598; 29085473; 9426697).

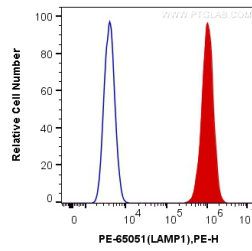
## Storage

**Storage:**  
Store at 2-8°C. Avoid exposure to light. Stable for one year after shipment.  
**Storage Buffer:**  
PBS with 0.1% sodium azide and a stabilizer, pH7.3

## Selected Validation Data



Immunofluorescent analysis of (4% PFA) fixed HeLa cells using PE-Anti-Human CD107a antibody (PE-65051, Clone: H4A3) at dilution of 1:50.



1X10<sup>6</sup> HeLa cells were intracellularly stained with 10 ul PE Anti-Human CD107a (PE-65051, Clone:H4A3) (red), or Control Antibody. Cells were fixed with 4% PFA and permeabilized with Flow Cytometry Perm Buffer (PF00011-C).