

# IHCeasy<sup>®</sup> PROX1 Ready-To-Use IHC Kit

Catalog Number: **KHC2760**

## General Information

Sample type:  
FFPE tissue  
Cited sample type:  
Reactivity:  
Human, Mouse, Rat  
Cited Reactivity:

Assay type:  
Immunohistochemistry  
Primary antibody type:  
Rabbit Recombinant  
Secondary antibody type:  
Polymer-HRP-Goat anti-Rabbit

## Kit Component

Component	Size	Concentration
Antigen Retrieval Buffer	100 mL	50×
Washing Buffer	100 mL ×2	20×
Blocking Buffer	5 mL	RTU
Primary Antibody	5 mL	RTU
Secondary Antibody	5 mL	RTU
Chromogen Component A	0.2 mL	RTU
Chromogen Component B	4 mL	RTU
Signal Enhancer	5 mL	RTU
Counter Staining Reagent	5 mL	RTU
Mounting Media	5 mL	RTU
Control Slide	1 slide (Optional)	FFPE
Datasheet	1 Copy	
Manual	1 Copy	

## Storage Instructions

All the reagents are stored at 2-8°C. The kit is stable for 6 months from the date of receipt.

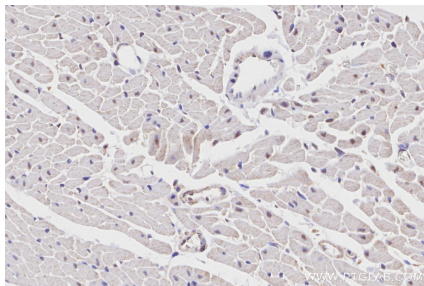
## Background

PROX1, Prospero homeobox protein 1, belongs to the Prospero homeobox family and contain a Prospero-type homeobox DNA-binding domain. PROX1 plays a fundamental role in early development of CNS and regulates the expression of gene and development of postmitotic, undifferentiated neurons. Also, PROX1 is a required regulator of the development of the lymphatic system.

## Synonyms

Homeobox prospero-like protein PROX1, prospero homeobox 1, Prospero homeobox protein 1, PROX-1

## Selected Validation Data



Immunohistochemical analysis of paraffin-embedded rat heart tissue slide using KHC2760 (PROX1 IHC Kit).