

IHCeasy[®] TAP1 Ready-To-Use IHC Kit

Catalog Number: **KHC2390**

General Information

Sample type:
FFPE tissue
Cited sample type:
Reactivity:
Human, Mouse, Rat
Cited Reactivity:

Assay type:
Immunohistochemistry
Primary antibody type:
Rabbit Polyclonal
Secondary antibody type:
Polymer-HRP-Goat anti-Rabbit

Kit Component

Component	Size	Concentration
Antigen Retrieval Buffer	100 mL	50×
Washing Buffer	100 mL ×2	20×
Blocking Buffer	5 mL	RTU
Primary Antibody	5 mL	RTU
Secondary Antibody	5 mL	RTU
Chromogen Component A	0.2 mL	RTU
Chromogen Component B	4 mL	RTU
Signal Enhancer	5 mL	RTU
Counter Staining Reagent	5 mL	RTU
Mounting Media	5 mL	RTU
Control Slide	1 slide (Optional)	FFPE
Datasheet	1 Copy	
Manual	1 Copy	

Storage Instructions

All the reagents are stored at 2-8°C. The kit is stable for 6 months from the date of receipt.

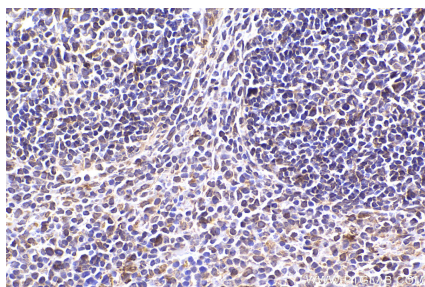
Background

TAP1, also known as ABCB2, PSF1 or RING4, is a member of the ATP-binding cassette (ABC) family of transmembrane transporters and is an essential component of the major histocompatibility complex (MHC) class I antigen-presenting pathway. TAP is involved in the transport of antigens from the cytoplasm to the endoplasmic reticulum for association with MHC class I molecules. It also acts as a molecular scaffold for the final stage of MHC class I folding. Defects in TAP1 are a cause of bare lymphocyte syndrome type 1 (BLS1).

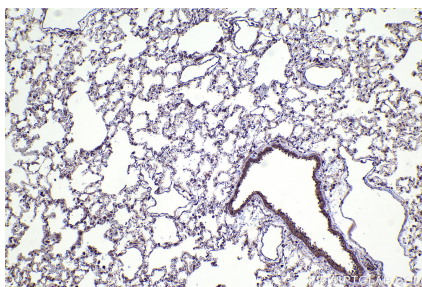
Synonyms

ABCB2, ATP-binding cassette sub-family B member 2, EC:7.4.2.14, PSF1, PSF-1

Selected Validation Data



Immunohistochemical analysis of paraffin-embedded mouse spleen tissue slide using KHC2390 (TAP1 IHC Kit).



Immunohistochemical analysis of paraffin-embedded rat lung tissue slide using KHC2390 (TAP1 IHC Kit).