

# IHCeasy<sup>®</sup> CDC42 Ready-To-Use IHC Kit

Catalog Number: **KHC2336**

## General Information

Sample type:  
FFPE tissue  
Cited sample type:  
Reactivity:  
Human, Mouse, Rat  
Cited Reactivity:

Assay type:  
Immunohistochemistry  
Primary antibody type:  
Rabbit Polyclonal  
Secondary antibody type:  
Polymer-HRP-Goat anti-Rabbit

## Kit Component

Component	Size	Concentration
Antigen Retrieval Buffer	100 mL	50×
Washing Buffer	100 mL ×2	20×
Blocking Buffer	5 mL	RTU
Primary Antibody	5 mL	RTU
Secondary Antibody	5 mL	RTU
Chromogen Component A	0.2 mL	RTU
Chromogen Component B	4 mL	RTU
Signal Enhancer	5 mL	RTU
Counter Staining Reagent	5 mL	RTU
Mounting Media	5 mL	RTU
Control Slide	1 slide (Optional)	FFPE
Datasheet	1 Copy	
Manual	1 Copy	

## Storage Instructions

All the reagents are stored at 2-8°C. The kit is stable for 6 months from the date of receipt.

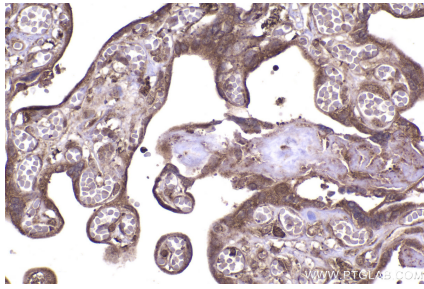
## Background

Cdc42, the human homologue of the cell division cycle 42 of *Saccharomyces cerevisiae*, belongs to the Rho/Rac subfamily of Ras-like GTPases. It acts as molecular switches to regulate numerous cellular responses including the organization of the actin cytoskeleton, gene transcription, cell cycle progression, and membrane trafficking.

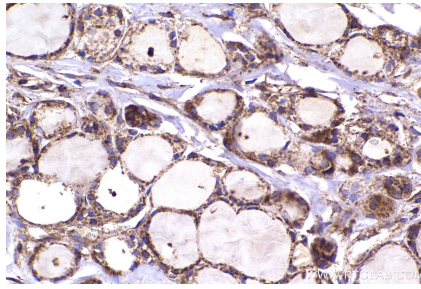
## Synonyms

G25K GTP-binding protein, G25K GTP binding protein, G25K, EC:3.6.5.2

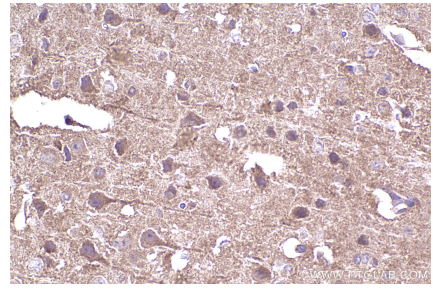
## Selected Validation Data



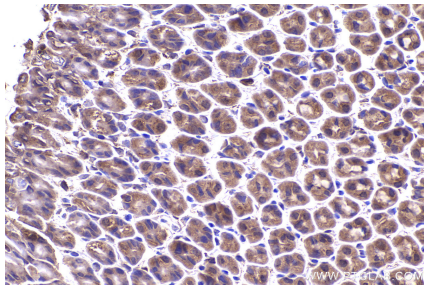
Immunohistochemical analysis of paraffin-embedded human placenta tissue slide using KHC2336 (CDC42 IHC Kit).



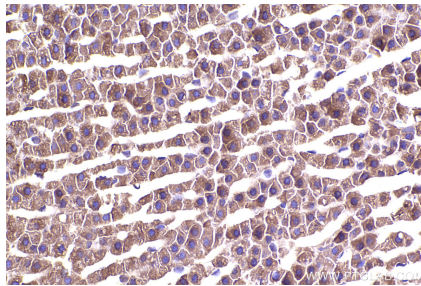
Immunohistochemical analysis of paraffin-embedded human thyroid cancer tissue slide using KHC2336 (CDC42 IHC Kit).



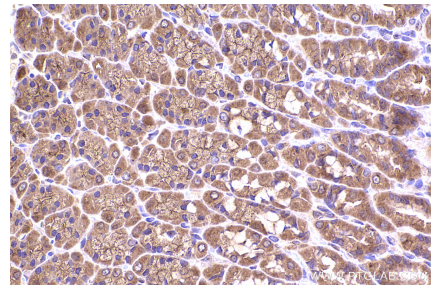
Immunohistochemical analysis of paraffin-embedded mouse brain tissue slide using KHC2336 (CDC42 IHC Kit).



Immunohistochemical analysis of paraffin-embedded mouse stomach tissue slide using KHC2336 (CDC42 IHC Kit).



Immunohistochemical analysis of paraffin-embedded rat adrenal gland tissue slide using KHC2336 (CDC42 IHC Kit).



Immunohistochemical analysis of paraffin-embedded rat stomach tissue slide using KHC2336 (CDC42 IHC Kit).