

IHCeasy[®] SMARCA4 Ready-To-Use IHC Kit

Catalog Number: **KHC2303**

General Information

Sample type:
FFPE tissue
Cited sample type:
Reactivity:
Human, Mouse, Rat
Cited Reactivity:

Assay type:
Immunohistochemistry
Primary antibody type:
Rabbit Recombinant
Secondary antibody type:
Polymer-HRP-Goat anti-Rabbit

Kit Component

Component	Size	Concentration
Antigen Retrieval Buffer	100 mL	50×
Washing Buffer	100 mL ×2	20×
Blocking Buffer	5 mL	RTU
Primary Antibody	5 mL	RTU
Secondary Antibody	5 mL	RTU
Chromogen Component A	0.2 mL	RTU
Chromogen Component B	4 mL	RTU
Signal Enhancer	5 mL	RTU
Counter Staining Reagent	5 mL	RTU
Mounting Media	5 mL	RTU
Control Slide	1 slide (Optional)	FFPE
Datasheet	1 Copy	
Manual	1 Copy	

Storage Instructions

All the reagents are stored at 2-8°C. The kit is stable for 6 months from the date of receipt.

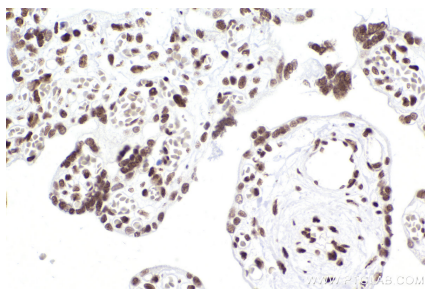
Background

SMARCA4, also named as BAF190A, BRG1, SNF2B and SNF2L4, belongs to the SNF2/RAD54 helicase family. SMARCA4 is a transcriptional coactivator cooperating with nuclear hormone receptors to potentiate transcriptional activation. It is a component of the CREST-BRG1 complex, a multiprotein complex that regulates promoter activation by orchestrating a calcium-dependent release of a repressor complex and a recruitment of an activator complex. It is also involved in vitamin D-coupled transcription regulation via its association with the WINAC complex, a chromatin-remodeling complex recruited by vitamin D receptor (VDR), which is required for the ligand-bound VDR-mediated transrepression of the CYP27B1 gene.

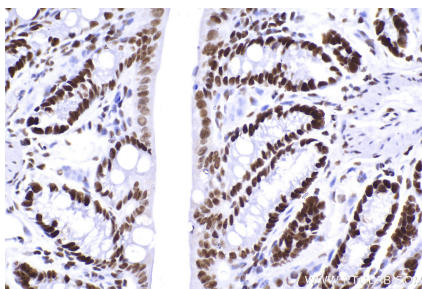
Synonyms

BRG1 associated factor 190A, BRG1, BAF190A, BAF190, ATP-dependent helicase SMARCA4

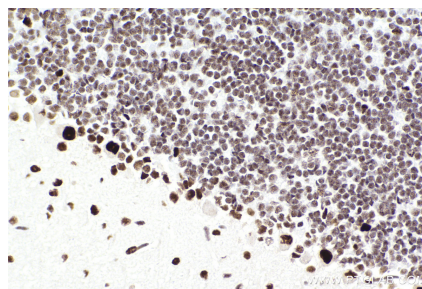
Selected Validation Data



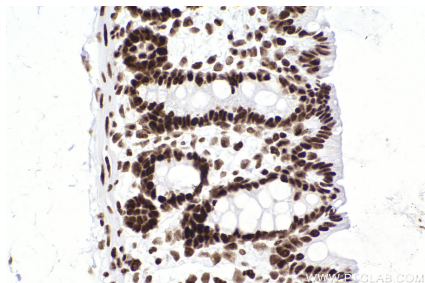
Immunohistochemical analysis of paraffin-embedded human placenta tissue slide using KHC2303 (SMARCA4 IHC Kit).



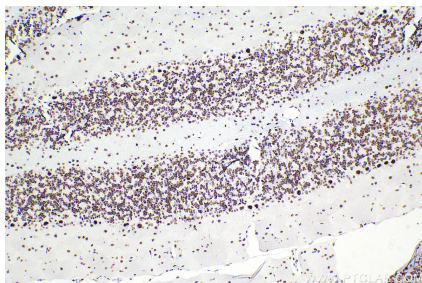
Immunohistochemical analysis of paraffin-embedded mouse colon tissue slide using KHC2303 (SMARCA4 IHC Kit).



Immunohistochemical analysis of paraffin-embedded mouse cerebellum tissue slide using KHC2303 (SMARCA4 IHC Kit).



Immunohistochemical analysis of paraffin-embedded rat colon tissue slide using KHC2303 (SMARCA4 IHC Kit).



Immunohistochemical analysis of paraffin-embedded rat cerebellum tissue slide using KHC2303 (SMARCA4 IHC Kit).