

IHCeasy[®] FEN1 Ready-To-Use IHC Kit

Catalog Number: **KHC2256**

General Information

Sample type:
FFPE tissue
Cited sample type:
Reactivity:
Human, Mouse, Rat
Cited Reactivity:

Assay type:
Immunohistochemistry
Primary antibody type:
Rabbit Polyclonal
Secondary antibody type:
Polymer-HRP-Goat anti-Rabbit

Kit Component

Component	Size	Concentration
Antigen Retrieval Buffer	100 mL	50×
Washing Buffer	100 mL ×2	20×
Blocking Buffer	5 mL	RTU
Primary Antibody	5 mL	RTU
Secondary Antibody	5 mL	RTU
Chromogen Component A	0.2 mL	RTU
Chromogen Component B	4 mL	RTU
Signal Enhancer	5 mL	RTU
Counter Staining Reagent	5 mL	RTU
Mounting Media	5 mL	RTU
Control Slide	1 slide (Optional)	FFPE
Datasheet	1 Copy	
Manual	1 Copy	

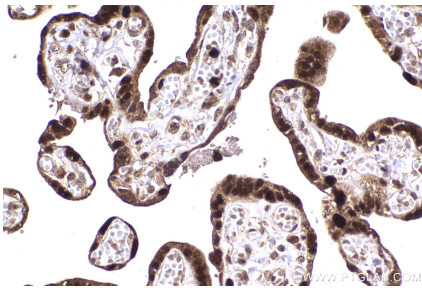
Storage Instructions

All the reagents are stored at 2-8°C. The kit is stable for 6 months from the date of receipt.

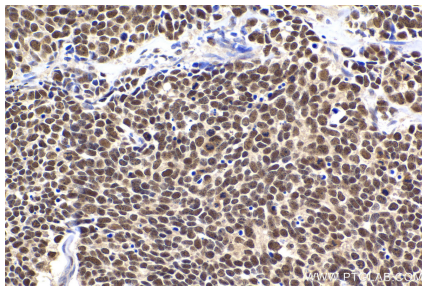
Background

FEN1(Flap endonuclease-1) is the prototypical member of the 5'-nuclease superfamily, whose activities span a range of cellular pathways involved in DNA replication and genome maintenance. FEN1 is a structure-selective metallonuclease essential for Okazaki fragment maturation through efficient removal of 5' flaps resulting from strand displacement during lagging-strand synthesis. FEN1 is overexpressed in multiple cancer types, and has been suggested both as a biomarker relating to prognosis and disease progression and as a potential therapeutic target.

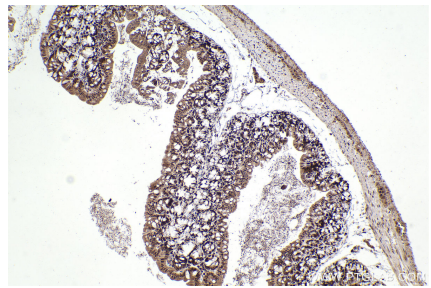
Selected Validation Data



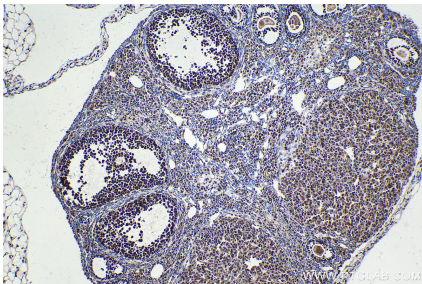
Immunohistochemical analysis of paraffin-embedded human placenta tissue slide using KHC2256 (FEN1 IHC Kit).



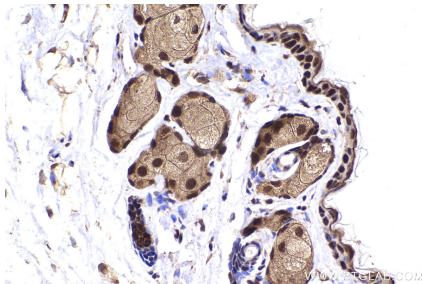
Immunohistochemical analysis of paraffin-embedded human lung cancer tissue slide using KHC2256 (FEN1 IHC Kit).



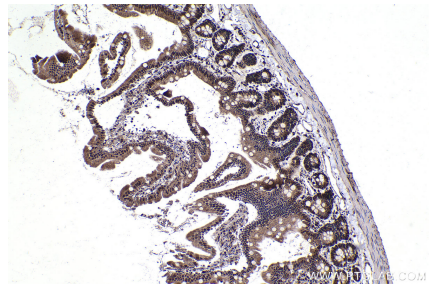
Immunohistochemical analysis of paraffin-embedded mouse small intestine tissue slide using KHC2256 (FEN1 IHC Kit).



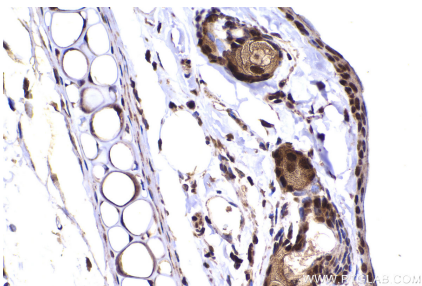
Immunohistochemical analysis of paraffin-embedded mouse ovary tissue slide using KHC2256 (FEN1 IHC Kit).



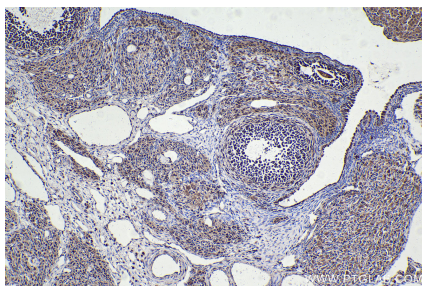
Immunohistochemical analysis of paraffin-embedded mouse skin tissue slide using KHC2256 (FEN1 IHC Kit).



Immunohistochemical analysis of paraffin-embedded rat small intestine tissue slide using KHC2256 (FEN1 IHC Kit).



Immunohistochemical analysis of paraffin-embedded rat skin tissue slide using KHC2256 (FEN1 IHC Kit).



Immunohistochemical analysis of paraffin-embedded rat ovary tissue slide using KHC2256 (FEN1 IHC Kit).