

# IHCeasy<sup>®</sup> PKM2 Ready-To-Use IHC Kit

Catalog Number: **KHC2184**

## General Information

Sample type:  
FFPE tissue  
Cited sample type:  
Reactivity:  
Human, Mouse, Rat  
Cited Reactivity:

Assay type:  
Immunohistochemistry  
Primary antibody type:  
Mouse Monoclonal  
Secondary antibody type:  
Polymer-HRP-Goat anti-Mouse

## Kit Component

Component	Size	Concentration
Antigen Retrieval Buffer	100 mL	50×
Washing Buffer	100 mL ×2	20×
Blocking Buffer	5 mL	RTU
Primary Antibody	5 mL	RTU
Secondary Antibody	5 mL	RTU
Chromogen Component A	0.2 mL	RTU
Chromogen Component B	4 mL	RTU
Signal Enhancer	5 mL	RTU
Counter Staining Reagent	5 mL	RTU
Mounting Media	5 mL	RTU
Control Slide	1 slide (Optional)	FFPE
Datasheet	1 Copy	
Manual	1 Copy	

## Storage Instructions

All the reagents are stored at 2-8°C. The kit is stable for 6 months from the date of receipt.

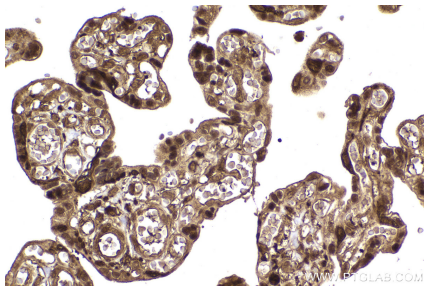
## Background

PKM, also named as OIP3, PK2, PK3, PKM, p58, THBP1, CTHBP and Tumor M2-PK, belongs to the pyruvate kinase family. It is glycolytic enzyme that catalyzes the transfer of a phosphoryl group from phosphoenolpyruvate (PEP) to ADP, generating ATP. It stimulates POU5F1-mediated transcriptional activation. PKM plays a general role in caspase independent cell death of tumor cells. PKM has 2 isoforms, the activity of the M2 isoform can be inhibited by tyrosine kinase signalling in tumour cells. Primary antibody in this kit antibody is specific to PKM2 isoform.

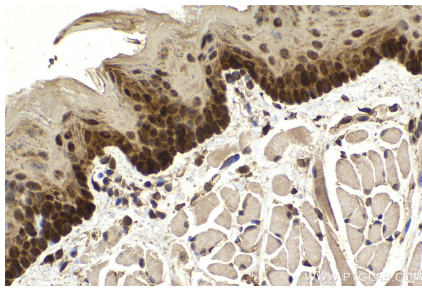
## Synonyms

CTHBP, OIP 3, OIP3, Opa interacting protein 3, p58, PK2, PK3, PKM, PKM2, PKM2 pyruvate kinase, muscle, Pyruvate kinase 2/3, Pyruvate kinase muscle isozyme, TCB, THBP1, Tumor M2 PK

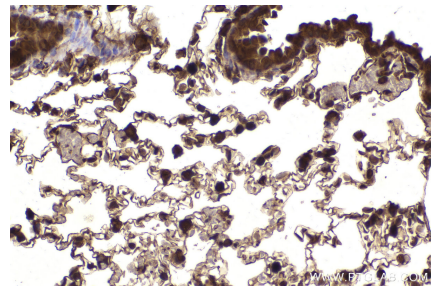
## Selected Validation Data



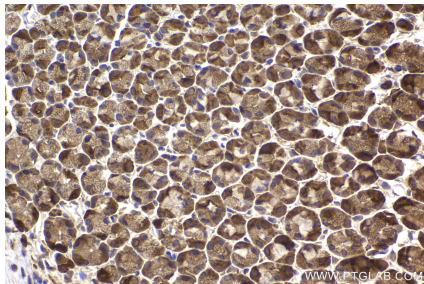
Immunohistochemical analysis of paraffin-embedded human placenta tissue slide using KHC2184 (PKM2 IHC Kit).



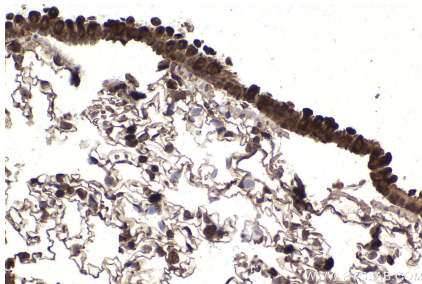
Immunohistochemical analysis of paraffin-embedded mouse tongue tissue slide using KHC2184 (PKM2 IHC Kit).



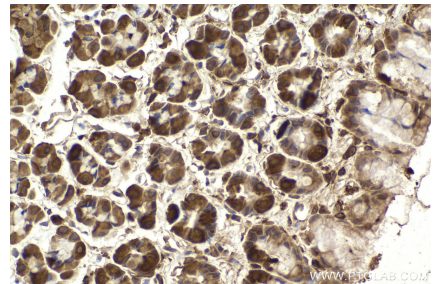
Immunohistochemical analysis of paraffin-embedded mouse lung tissue slide using KHC2184 (PKM2 IHC Kit).



Immunohistochemical analysis of paraffin-embedded mouse stomach tissue slide using KHC2184 (PKM2 IHC Kit).



Immunohistochemical analysis of paraffin-embedded rat lung tissue slide using KHC2184 (PKM2 IHC Kit).



Immunohistochemical analysis of paraffin-embedded rat stomach tissue slide using KHC2184 (PKM2 IHC Kit).