

IHCeasy[®] DLD Ready-To-Use IHC Kit

Catalog Number: **KHC2172**

General Information

Sample type:
FFPE tissue
Cited sample type:
Reactivity:
Human, Mouse, Rat
Cited Reactivity:

Assay type:
Immunohistochemistry
Primary antibody type:
Mouse Monoclonal
Secondary antibody type:
Polymer-HRP-Goat anti-Mouse

Kit Component

Component	Size	Concentration
Antigen Retrieval Buffer	100 mL	50×
Washing Buffer	100 mL ×2	20×
Blocking Buffer	5 mL	RTU
Primary Antibody	5 mL	RTU
Secondary Antibody	5 mL	RTU
Chromogen Component A	0.2 mL	RTU
Chromogen Component B	4 mL	RTU
Signal Enhancer	5 mL	RTU
Counter Staining Reagent	5 mL	RTU
Mounting Media	5 mL	RTU
Control Slide	1 slide (Optional)	FFPE
Datasheet	1 Copy	
Manual	1 Copy	

Storage Instructions

All the reagents are stored at 2-8°C. The kit is stable for 6 months from the date of receipt.

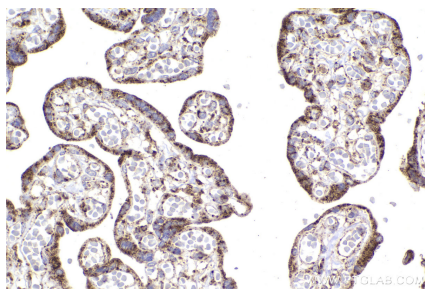
Background

DLD(Dihydrolipoyl dehydrogenase, mitochondrial) is also named as GCSL, LAD, PHE3 and belongs to the class-I pyridine nucleotide-disulfide oxidoreductase family. It catalyzes the oxidation of dihydrolipoamide, hE3 uses two molecules : non-covalently bound FAD and a transiently bound substrate, NAD+. DLD is involved in the hyperactivation of spermatazoa during capacitation and in the spermatazoal acrosome reaction.

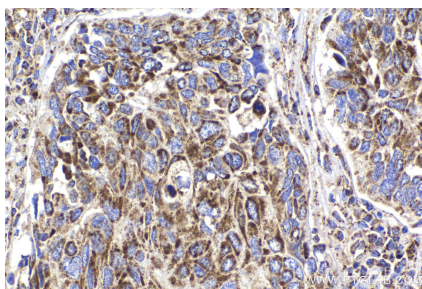
Synonyms

dihydrolipoamide dehydrogenase, DLD, DLDH, E3, GCSL, LAD, PHE3

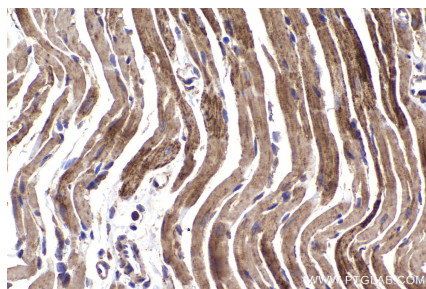
Selected Validation Data



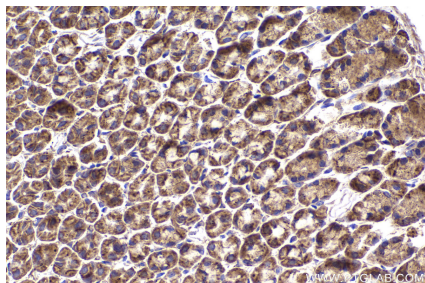
Immunohistochemical analysis of paraffin-embedded human placenta tissue slide using KHC2172 (DLD IHC Kit).



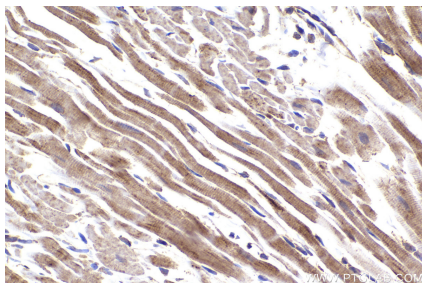
Immunohistochemical analysis of paraffin-embedded human lung cancer tissue slide using KHC2172 (DLD IHC Kit).



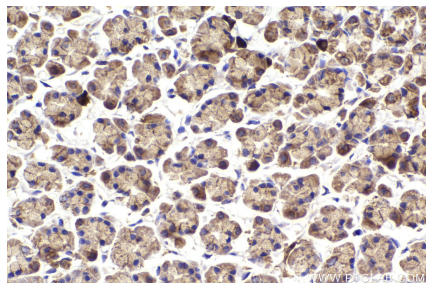
Immunohistochemical analysis of paraffin-embedded mouse heart tissue slide using KHC2172 (DLD IHC Kit).



Immunohistochemical analysis of paraffin-embedded mouse stomach tissue slide using KHC2172 (DLD IHC Kit).



Immunohistochemical analysis of paraffin-embedded rat heart tissue slide using KHC2172 (DLD IHC Kit).



Immunohistochemical analysis of paraffin-embedded rat stomach tissue slide using KHC2172 (DLD IHC Kit).