

# IHCeasy<sup>®</sup> IKBKG Ready-To-Use IHC Kit

Catalog Number: **KHC2081**

## General Information

Sample type:  
FFPE tissue  
Cited sample type:  
Reactivity:  
Human, Mouse, Rat  
Cited Reactivity:

Assay type:  
Immunohistochemistry  
Primary antibody type:  
Mouse Monoclonal  
Secondary antibody type:  
Polymer-HRP-Goat anti-Mouse

## Kit Component

| Component                | Size               | Concentration |
|--------------------------|--------------------|---------------|
| Antigen Retrieval Buffer | 100 mL             | 50×           |
| Washing Buffer           | 100 mL ×2          | 20×           |
| Blocking Buffer          | 5 mL               | RTU           |
| Primary Antibody         | 5 mL               | RTU           |
| Secondary Antibody       | 5 mL               | RTU           |
| Chromogen Component A    | 0.2 mL             | RTU           |
| Chromogen Component B    | 4 mL               | RTU           |
| Signal Enhancer          | 5 mL               | RTU           |
| Counter Staining Reagent | 5 mL               | RTU           |
| Mounting Media           | 5 mL               | RTU           |
| Control Slide            | 1 slide (Optional) | FFPE          |
| Datasheet                | 1 Copy             |               |
| Manual                   | 1 Copy             |               |

## Storage Instructions

All the reagents are stored at 2-8°C. The kit is stable for 6 months from the date of receipt.

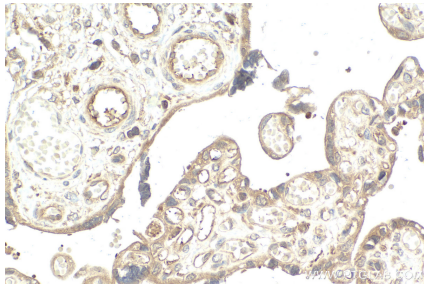
## Background

IKBKG, also named as FIP3, NEMO, IKKAP1 and IKKG, is specifically phosphorylate serine or threonine residues that are followed by a proline residue. IKBKG is regulatory subunit of the IKK core complex which phosphorylates inhibitors of NF-kappa-B thus leading to the dissociation of the inhibitor/NF-kappa-B complex and ultimately the degradation of the inhibitor. Its binding to scaffolding polyubiquitin seems to play a role in IKK activation by multiple signaling receptor pathways.

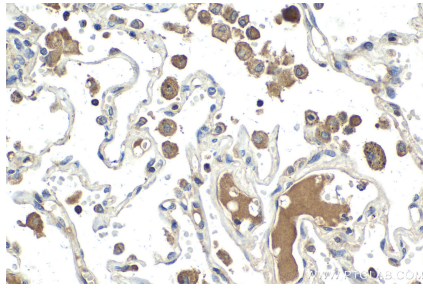
## Synonyms

IKB kinase-associated protein 1, I-kappa-B kinase subunit gamma, Fip3p, FIP-3, FIP3

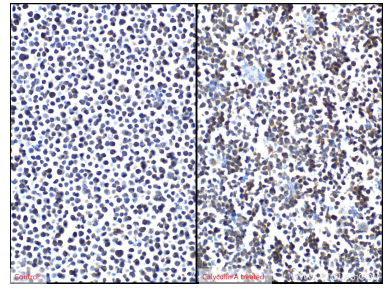
## Selected Validation Data



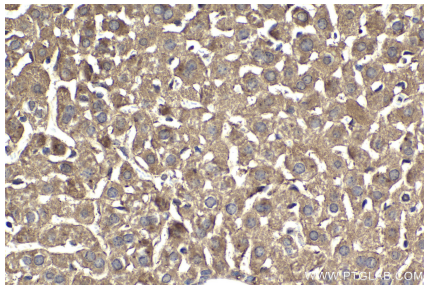
Immunohistochemical analysis of paraffin-embedded human placenta tissue slide using KHC2081 (IKBKG IHC Kit).



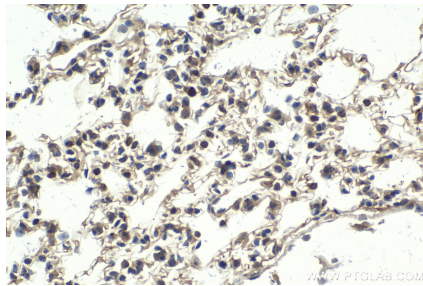
Immunohistochemical analysis of paraffin-embedded human lung tissue slide using KHC2081 (IKBKG IHC Kit).



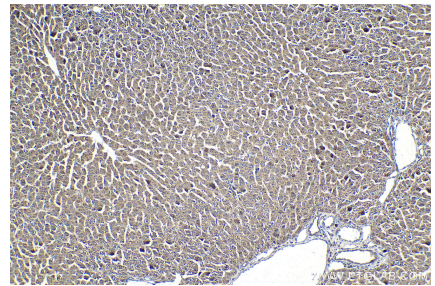
Immunohistochemical analysis of paraffin-embedded Jurkat cells slide using KHC2081 (IKBKG IHC Kit).



Immunohistochemical analysis of paraffin-embedded mouse liver tissue slide using KHC2081 (IKBKG IHC Kit).



Immunohistochemical analysis of paraffin-embedded mouse lung tissue slide using KHC2081 (IKBKG IHC Kit).



Immunohistochemical analysis of paraffin-embedded rat liver tissue slide using KHC2081 (IKBKG IHC Kit).