

# IHCeasy<sup>®</sup> CHMP1A Ready-To-Use IHC Kit

Catalog Number: **KHC1951**

## General Information

Sample type:  
FFPE tissue  
Cited sample type:  
Reactivity:  
Human, Mouse, Rat  
Cited Reactivity:

Assay type:  
Immunohistochemistry  
Primary antibody type:  
Rabbit Polyclonal  
Secondary antibody type:  
Polymer-HRP-Goat anti-Rabbit

## Kit Component

Component	Size	Concentration
Antigen Retrieval Buffer	100 mL	50×
Washing Buffer	100 mL ×2	20×
Blocking Buffer	5 mL	RTU
Primary Antibody	5 mL	RTU
Secondary Antibody	5 mL	RTU
Chromogen Component A	0.2 mL	RTU
Chromogen Component B	4 mL	RTU
Signal Enhancer	5 mL	RTU
Counter Staining Reagent	5 mL	RTU
Mounting Media	5 mL	RTU
Control Slide	1 slide (Optional)	FFPE
Datasheet	1 Copy	
Manual	1 Copy	

## Storage Instructions

All the reagents are stored at 2-8°C. The kit is stable for 6 months from the date of receipt.

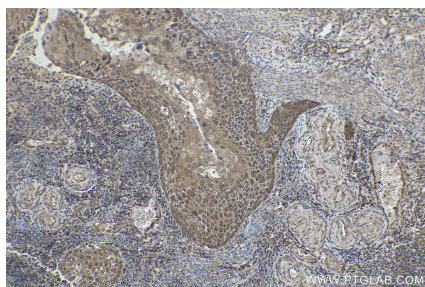
## Background

Charged multivesicular body protein 1A (CHMP1A), also known as chromatin modifying protein 1A, is a member of the ESCRT-III (endosomal sorting complex required for transport III) complex which is involved in degradation of internalized transmembrane receptor proteins and formation of multivesicular bodies (MVBs). CHMP1A has both nuclear and cytoplasmic distributions. Subcellular localization of CHMP1A seems to vary depending on the cell type. CHMP1A is required for MVBs formation and has a role in stable gene silencing within the nucleus. Besides, the tumor suppressor role of CHMP1A has also been reported.

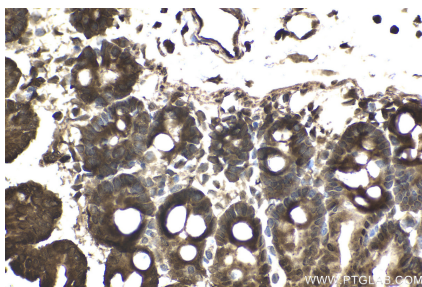
## Synonyms

KIAA0047, hVps46-1, hVps46 1, Chromatin-modifying protein 1a, chromatin modifying protein 1A

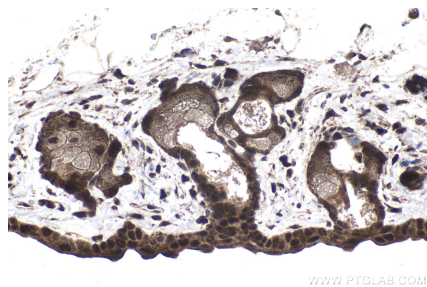
## Selected Validation Data



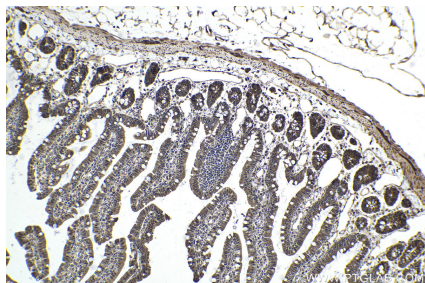
Immunohistochemical analysis of paraffin-embedded human cervical cancer tissue slide using KHC1951 (CHMP1A IHC Kit).



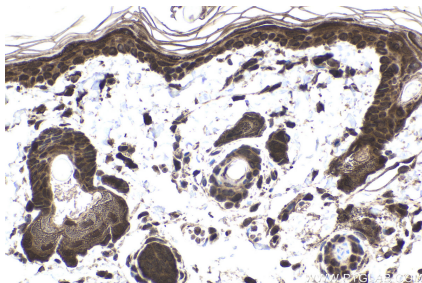
Immunohistochemical analysis of paraffin-embedded mouse intestine tissue slide using KHC1951 (CHMP1A IHC Kit).



Immunohistochemical analysis of paraffin-embedded mouse skin tissue slide using KHC1951 (CHMP1A IHC Kit).



Immunohistochemical analysis of paraffin-embedded rat small intestine tissue slide using KHC1951 (CHMP1A IHC Kit).



Immunohistochemical analysis of paraffin-embedded rat skin tissue slide using KHC1951 (CHMP1A IHC Kit).