

# IHCeasy<sup>®</sup> CDK5R1 Ready-To-Use IHC Kit

Catalog Number: **KHC1748**

## General Information

Sample type:  
FFPE tissue  
Cited sample type:  
Reactivity:  
Human, Mouse  
Cited Reactivity:

Assay type:  
Immunohistochemistry  
Primary antibody type:  
Mouse Monoclonal  
Secondary antibody type:  
Polymer-HRP-Goat anti-Mouse

## Kit Component

Component	Size	Concentration
Antigen Retrieval Buffer	100 mL	50×
Washing Buffer	100 mL ×2	20×
Blocking Buffer	5 mL	RTU
Primary Antibody	5 mL	RTU
Secondary Antibody	5 mL	RTU
Chromogen Component A	0.2 mL	RTU
Chromogen Component B	4 mL	RTU
Signal Enhancer	5 mL	RTU
Counter Staining Reagent	5 mL	RTU
Mounting Media	5 mL	RTU
Control Slide	1 slide (Optional)	FFPE
Datasheet	1 Copy	
Manual	1 Copy	

## Storage Instructions

All the reagents are stored at 2-8°C. The kit is stable for 6 months from the date of receipt.

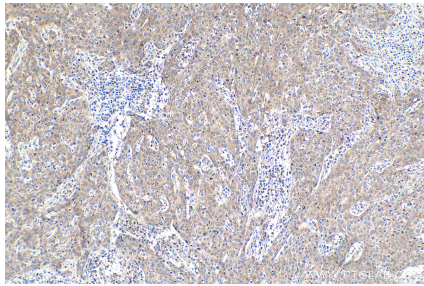
## Background

Cyclin dependent kinase-5 (Cdk5), is an atypical but essential member of the Cdk family of proline-directed serine/threonine kinases. CDK5R1 encodes p35, a specific activator of the serine/threonine kinase CDK5, which plays a central role in neuronal migration and differentiation during central nervous system development. The p35 form of this protein is proteolytically cleaved by calpain, generating a p25 form.

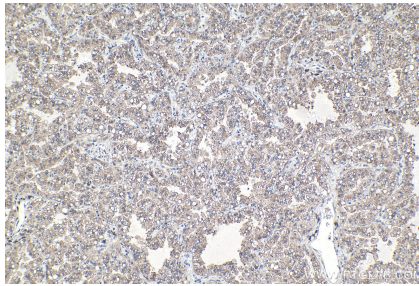
## Synonyms

CDK5 activator 1, CDK5P35, CDK5R, CDK5R1, NCK5A, p23, p25, p35, p35nck5a, TPKII regulatory subunit

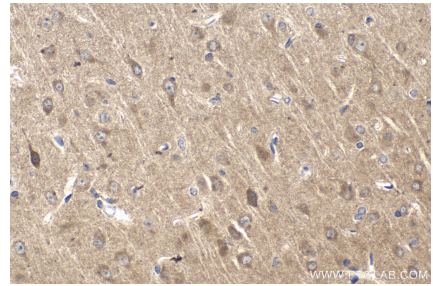
## Selected Validation Data



Immunohistochemical analysis of paraffin-embedded human cervical cancer tissue slide using KHC1748 (CDK5R1 IHC Kit).



Immunohistochemical analysis of paraffin-embedded human lung cancer tissue slide using KHC1748 (CDK5R1 IHC Kit).



Immunohistochemical analysis of paraffin-embedded mouse brain tissue slide using KHC1748 (CDK5R1 IHC Kit).