

IHCeasy[®] CRADD Ready-To-Use IHC Kit

Catalog Number: **KHC1654**

General Information

Sample type:
FFPE tissue
Cited sample type:
Reactivity:
Human, Mouse, Rat
Cited Reactivity:

Assay type:
Immunohistochemistry
Primary antibody type:
Rabbit Polyclonal
Secondary antibody type:
Polymer-HRP-Goat anti-Rabbit

Kit Component

Component	Size	Concentration
Antigen Retrieval Buffer	100 mL	50×
Washing Buffer	100 mL ×2	20×
Blocking Buffer	5 mL	RTU
Primary Antibody	5 mL	RTU
Secondary Antibody	5 mL	RTU
Chromogen Component A	0.2 mL	RTU
Chromogen Component B	4 mL	RTU
Signal Enhancer	5 mL	RTU
Counter Staining Reagent	5 mL	RTU
Mounting Media	5 mL	RTU
Control Slide	1 slide (Optional)	FFPE
Datasheet	1 Copy	
Manual	1 Copy	

Storage Instructions

All the reagents are stored at 2-8°C. The kit is stable for 6 months from the date of receipt.

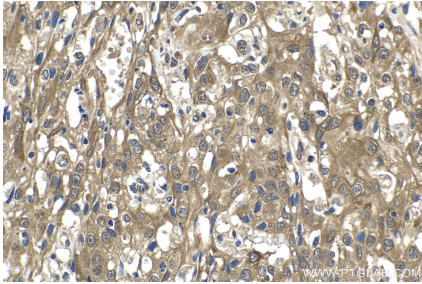
Background

RAIDD, also named as CRADD, is an apoptotic adaptor molecule specific for caspase-2 and FASL/TNF receptor-interacting protein RIP. In the presence of RIP and TRADD, CRADD recruits caspase-2 to the TNFR-1 signalling complex. CRADD interacts with BCL10 through its caspase recruitment domain and suppresses interactions between BCL10 and CARMA1. It is a negative regulator of the CARMA1 signalosome and suppressor of Th1-and Th17-mediated inflammatory responses.

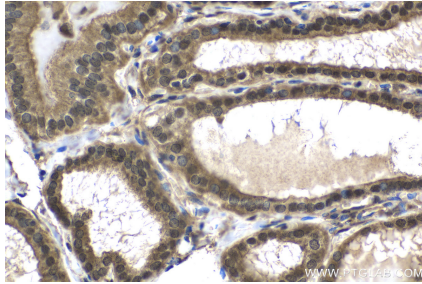
Synonyms

CRADD, RAIDD

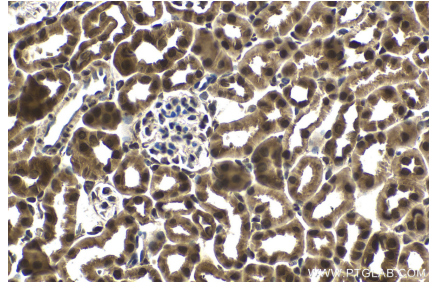
Selected Validation Data



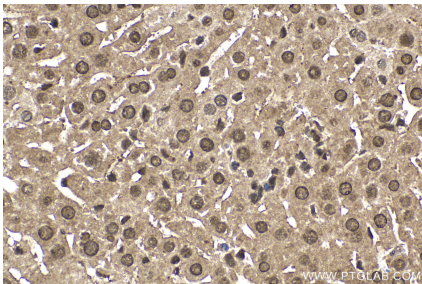
Immunohistochemical analysis of paraffin-embedded human cervical cancer tissue slide using KHC1654 (CRADD IHC Kit).



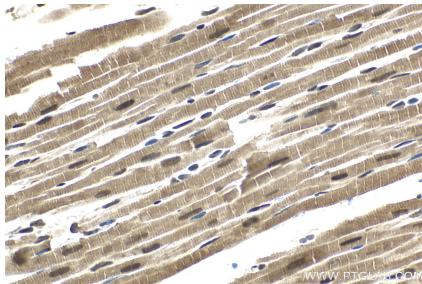
Immunohistochemical analysis of paraffin-embedded human thyroid cancer tissue slide using KHC1654 (CRADD IHC Kit).



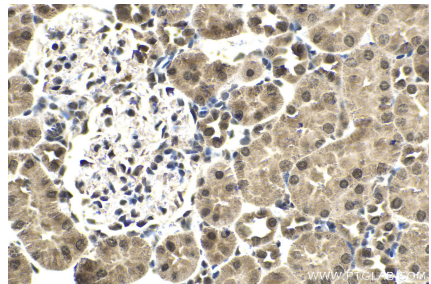
Immunohistochemical analysis of paraffin-embedded mouse kidney tissue slide using KHC1654 (CRADD IHC Kit).



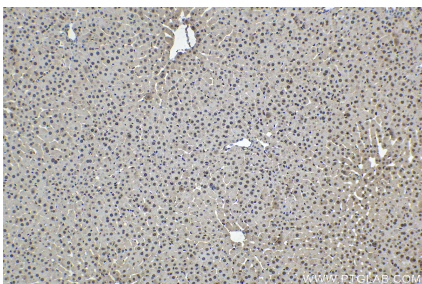
Immunohistochemical analysis of paraffin-embedded mouse liver tissue slide using KHC1654 (CRADD IHC Kit).



Immunohistochemical analysis of paraffin-embedded rat heart tissue slide using KHC1654 (CRADD IHC Kit).



Immunohistochemical analysis of paraffin-embedded rat kidney tissue slide using KHC1654 (CRADD IHC Kit).



Immunohistochemical analysis of paraffin-embedded rat liver tissue slide using KHC1654 (CRADD IHC Kit).