

# IHCeasy<sup>®</sup> MAPK10 Ready-To-Use IHC Kit

Catalog Number: **KHC1626**

## General Information

Sample type:  
FFPE tissue  
Cited sample type:  
Reactivity:  
Human, Mouse, Rat  
Cited Reactivity:

Assay type:  
Immunohistochemistry  
Primary antibody type:  
Rabbit Polyclonal  
Secondary antibody type:  
Polymer-HRP-Goat anti-Rabbit

## Kit Component

Component	Size	Concentration
Antigen Retrieval Buffer	100 mL	50×
Washing Buffer	100 mL ×2	20×
Blocking Buffer	5 mL	RTU
Primary Antibody	5 mL	RTU
Secondary Antibody	5 mL	RTU
Chromogen Component A	0.2 mL	RTU
Chromogen Component B	4 mL	RTU
Signal Enhancer	5 mL	RTU
Counter Staining Reagent	5 mL	RTU
Mounting Media	5 mL	RTU
Control Slide	1 slide (Optional)	FFPE
Datasheet	1 Copy	
Manual	1 Copy	

## Storage Instructions

All the reagents are stored at 2-8°C. The kit is stable for 6 months from the date of receipt.

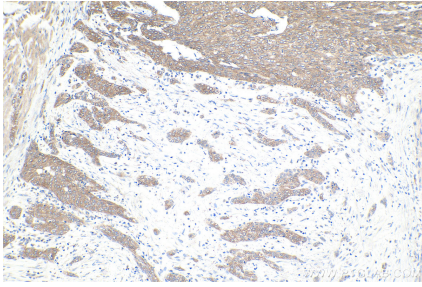
## Background

JNK, also named MAPK10 (mitogen-activated protein kinase 10), belongs to MAP kinase family. MAP kinases act as integration points for multiple biochemical signals, and thus are involved in a wide variety of cellular processes, such as proliferation, differentiation, transcription regulation and development. This kinase is mainly expressed in a subset of neurons in the nervous system, and is activated by threonine and tyrosine phosphorylation.

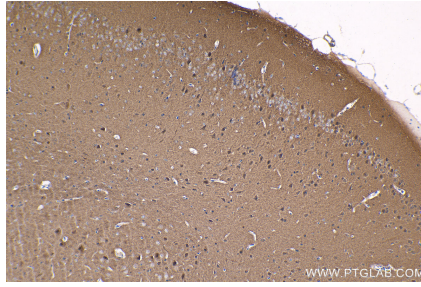
## Synonyms

c Jun N terminal kinase 3, FLJ12099, FLJ33785, JNK, JNK1, JNK1/2/3, JNK2, JNK3, JNK3A, MAP kinase 10, MAP kinase p49 3F12, MAPK 10, MAPK10, MAPK8, MAPK8/9/10, MAPK9, p493F12, p54bSAPK, PRKM10

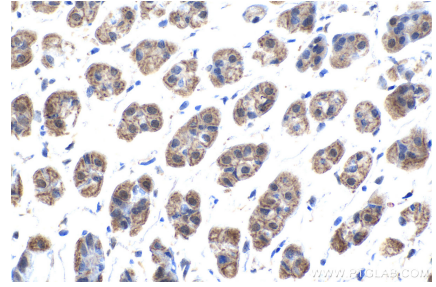
## Selected Validation Data



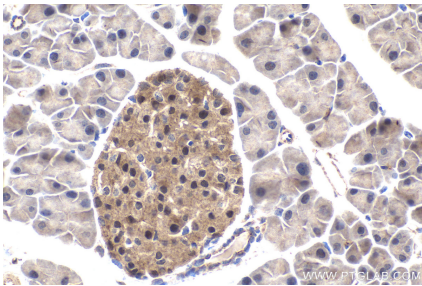
Immunohistochemical analysis of paraffin-embedded human urothelial carcinoma tissue slide using KHC1626 (MAPK10 IHC Kit).



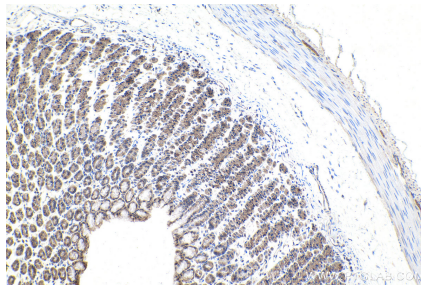
Immunohistochemical analysis of paraffin-embedded mouse brain tissue slide using KHC1626 (MAPK10 IHC Kit).



Immunohistochemical analysis of paraffin-embedded mouse stomach tissue slide using KHC1626 (MAPK10 IHC Kit).



Immunohistochemical analysis of paraffin-embedded mouse pancreas tissue slide using KHC1626 (MAPK10 IHC Kit).



Immunohistochemical analysis of paraffin-embedded rat stomach tissue slide using KHC1626 (MAPK10 IHC Kit).