

# IHCeasy<sup>®</sup> VHL Ready-To-Use IHC Kit

Catalog Number: KHC1592

## General Information

Sample type:  
FFPE tissue  
Cited sample type:  
Reactivity:  
Human, Mouse, Rat  
Cited Reactivity:

Assay type:  
Immunohistochemistry  
Primary antibody type:  
Rabbit Polyclonal  
Secondary antibody type:  
Polymer-HRP-Goat anti-Rabbit

## Kit Component

Component	Size	Concentration
Antigen Retrieval Buffer	100 mL	50×
Washing Buffer	100 mL ×2	20×
Blocking Buffer	5 mL	RTU
Primary Antibody	5 mL	RTU
Secondary Antibody	5 mL	RTU
Chromogen Component A	0.2 mL	RTU
Chromogen Component B	4 mL	RTU
Signal Enhancer	5 mL	RTU
Counter Staining Reagent	5 mL	RTU
Mounting Media	5 mL	RTU
Control Slide	1 slide (Optional)	FFPE
Datasheet	1 Copy	
Manual	1 Copy	

## Storage Instructions

All the reagents are stored at 2-8°C. The kit is stable for 6 months from the date of receipt.

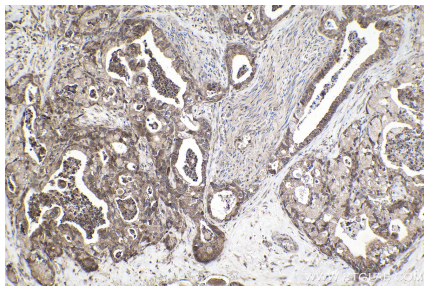
## Background

VHL (von Hippel-Lindau tumor suppressor) gene was identified as the tumor suppressor gene whose germ line mutations are associated with the inherited von Hippel-Lindau cancer syndrome. VHL patients develop a wide variety of tumors including retinal angioma, central nervous system hemangioblastoma, pheochromocytoma, and renal clear cell carcinoma. VHL localizes predominantly to the cytoplasmic compartment but engages in a dynamic nuclear-cytoplasmic shuttle.

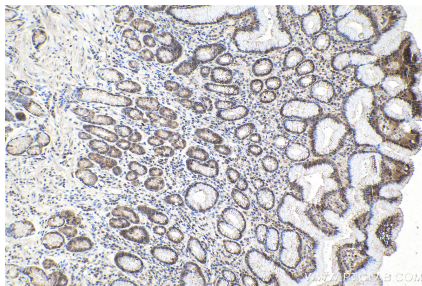
## Synonyms

HRCA1, Protein G7, pVHL, RCA1, VHL, VHL1

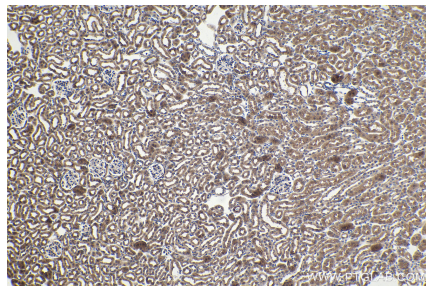
## Selected Validation Data



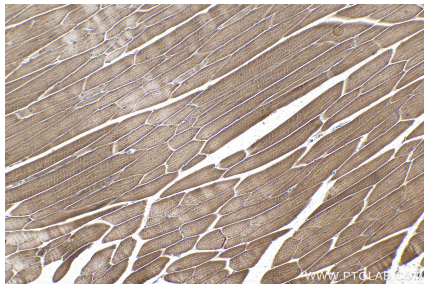
Immunohistochemical analysis of paraffin-embedded human pancreas cancer tissue slide using KHC1592 (VHL IHC Kit).



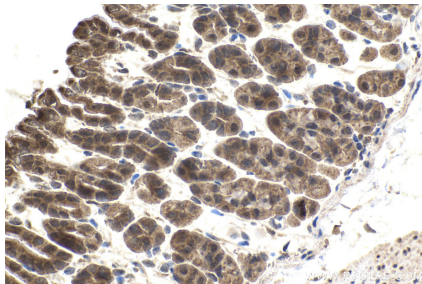
Immunohistochemical analysis of paraffin-embedded human stomach cancer tissue slide using KHC1592 (VHL IHC Kit).



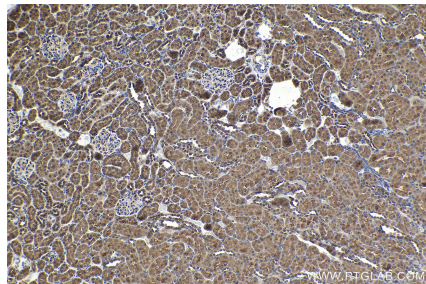
Immunohistochemical analysis of paraffin-embedded mouse kidney tissue slide using KHC1592 (VHL IHC Kit).



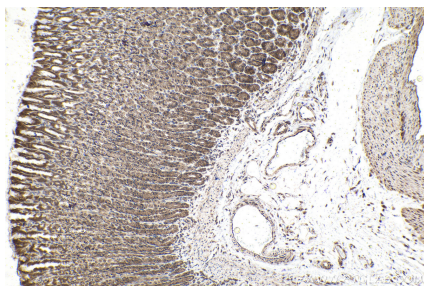
Immunohistochemical analysis of paraffin-embedded mouse skeletal muscle tissue slide using KHC1592 (VHL IHC Kit).



Immunohistochemical analysis of paraffin-embedded mouse stomach tissue slide using KHC1592 (VHL IHC Kit).



Immunohistochemical analysis of paraffin-embedded rat kidney tissue slide using KHC1592 (VHL IHC Kit).



Immunohistochemical analysis of paraffin-embedded rat stomach tissue slide using KHC1592 (VHL IHC Kit).