

IHCeasy[®] CHMP2A Ready-To-Use IHC Kit

Catalog Number: **KHC1455**

General Information

Sample type:
FFPE tissue
Cited sample type:
Reactivity:
Human, Mouse, Rat
Cited Reactivity:

Assay type:
Immunohistochemistry
Primary antibody type:
Rabbit Polyclonal
Secondary antibody type:
Polymer-HRP-Goat anti-Rabbit

Kit Component

Component	Size	Concentration
Antigen Retrieval Buffer	100 mL	50×
Washing Buffer	100 mL ×2	20×
Blocking Buffer	5 mL	RTU
Primary Antibody	5 mL	RTU
Secondary Antibody	5 mL	RTU
Chromogen Component A	0.2 mL	RTU
Chromogen Component B	4 mL	RTU
Signal Enhancer	5 mL	RTU
Counter Staining Reagent	5 mL	RTU
Mounting Media	5 mL	RTU
Control Slide	1 slide (Optional)	FFPE
Datasheet	1 Copy	
Manual	1 Copy	

Storage Instructions

All the reagents are stored at 2-8°C. The kit is stable for 6 months from the date of receipt.

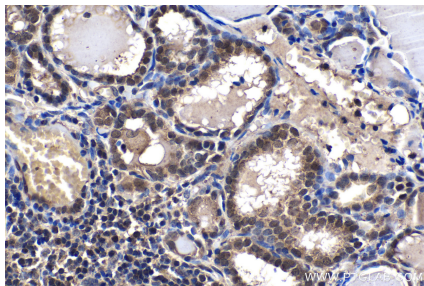
Background

CHMP2A, also known as Vps2-1, belongs to the chromatin-modifying protein/charged multivesicular body protein (CHMP) family. CHMP2A is a component of ESCRT-III (endosomal sorting complex required for transport III), a complex involved in degradation of surface receptor proteins and formation of endocytic multivesicular bodies (MVBs). It has been shown that CHMP2A can interact with and regulate the function of the AAA-ATPase VPS4B. CHMP2A is also reported to be involved in HIV budding.

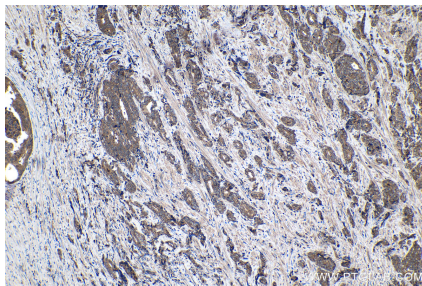
Synonyms

CHMP2, CHMP2A, chromatin modifying protein 2A, hVps2 1, VPS2, Vps2 1, VPS2A

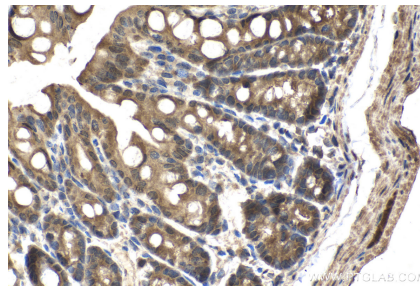
Selected Validation Data



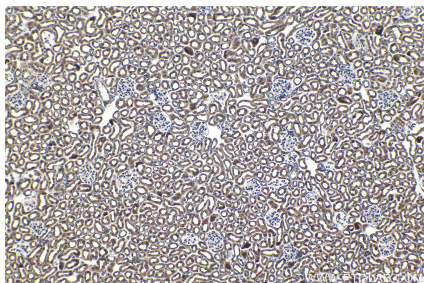
Immunohistochemical analysis of paraffin-embedded human thyroid cancer tissue slide using KHC1455 (CHMP2A IHC Kit).



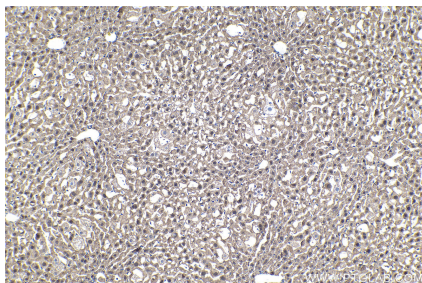
Immunohistochemical analysis of paraffin-embedded human prostate cancer tissue slide using KHC1455 (CHMP2A IHC Kit).



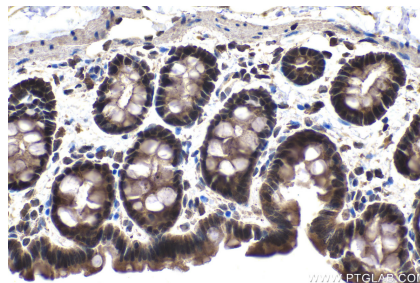
Immunohistochemical analysis of paraffin-embedded mouse colon tissue slide using KHC1455 (CHMP2A IHC Kit).



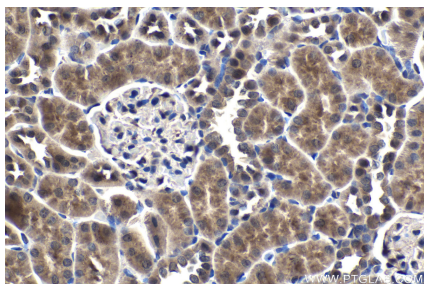
Immunohistochemical analysis of paraffin-embedded mouse kidney tissue slide using KHC1455 (CHMP2A IHC Kit).



Immunohistochemical analysis of paraffin-embedded mouse liver tissue slide using KHC1455 (CHMP2A IHC Kit).



Immunohistochemical analysis of paraffin-embedded rat colon tissue slide using KHC1455 (CHMP2A IHC Kit).



Immunohistochemical analysis of paraffin-embedded rat kidney tissue slide using KHC1455 (CHMP2A IHC Kit).