

IHCeasy[®] SDCBP Ready-To-Use IHC Kit

Catalog Number: **KHC1423**

General Information

Sample type:
FFPE tissue
Cited sample type:
Reactivity:
Human, Mouse, Rat
Cited Reactivity:

Assay type:
Immunohistochemistry
Primary antibody type:
Rabbit Polyclonal
Secondary antibody type:
Polymer-HRP-Goat anti-Rabbit

Kit Component

Component	Size	Concentration
Antigen Retrieval Buffer	100 mL	50×
Washing Buffer	100 mL ×2	20×
Blocking Buffer	5 mL	RTU
Primary Antibody	5 mL	RTU
Secondary Antibody	5 mL	RTU
Chromogen Component A	0.2 mL	RTU
Chromogen Component B	4 mL	RTU
Signal Enhancer	5 mL	RTU
Counter Staining Reagent	5 mL	RTU
Mounting Media	5 mL	RTU
Control Slide	1 slide (Optional)	FFPE
Datasheet	1 Copy	
Manual	1 Copy	

Storage Instructions

All the reagents are stored at 2-8°C. The kit is stable for 6 months from the date of receipt.

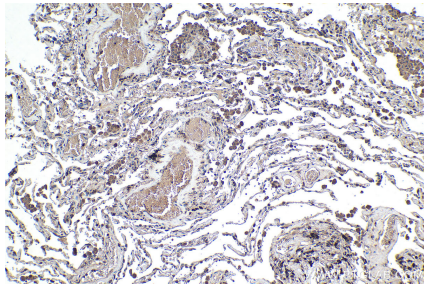
Background

Syntenin-1, also known as SDCBP (syndecan binding protein) and MDA-9 (melanoma differentiation-associated protein 9), was initially identified as a molecule linking syndecan-mediated signaling to the cytoskeleton. Syntenin-1 is a PDZ-domain-containing molecule that has many interaction partners, and regulates transmembrane-receptor trafficking, cell adhesion, tumor-cell metastasis and neuronal-synapse function. Syntenin-1 is primarily localized to membrane-associated adherens junctions and focal adhesions but is also found at the endoplasmic reticulum and nucleus.

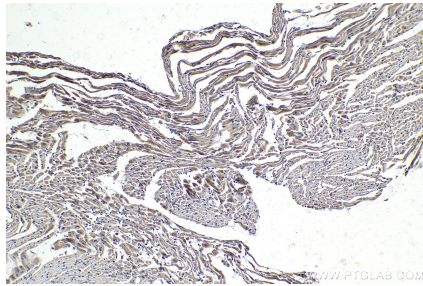
Synonyms

MDA 9, MDA9, Scaffold protein Pbp1, SDCBP, ST1, SYCL, Syndecan binding protein 1, Syntenin-1, TACIP18

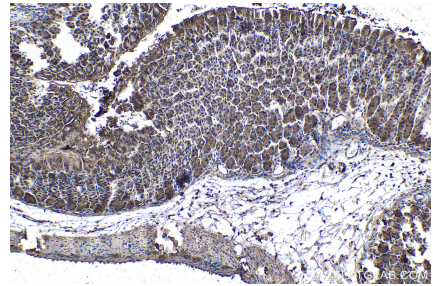
Selected Validation Data



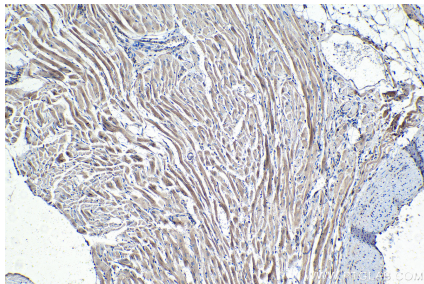
Immunohistochemical analysis of paraffin-embedded human lung tissue slide using KHC1423 (SDCBP IHC Kit).



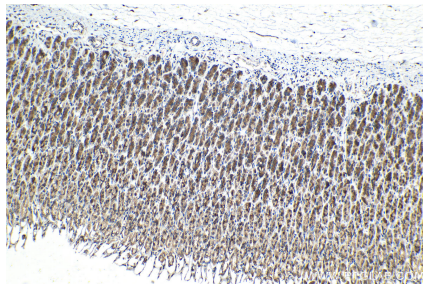
Immunohistochemical analysis of paraffin-embedded mouse heart tissue slide using KHC1423 (SDCBP IHC Kit).



Immunohistochemical analysis of paraffin-embedded mouse stomach tissue slide using KHC1423 (SDCBP IHC Kit).



Immunohistochemical analysis of paraffin-embedded rat heart tissue slide using KHC1423 (SDCBP IHC Kit).



Immunohistochemical analysis of paraffin-embedded rat stomach tissue slide using KHC1423 (SDCBP IHC Kit).