

IHCeasy[®] NFKBIA Ready-To-Use IHC Kit

Catalog Number: **KHC1368**

General Information

Sample type:
FFPE tissue
Cited sample type:
Reactivity:
Human, Mouse, Rat
Cited Reactivity:

Assay type:
Immunohistochemistry
Primary antibody type:
Mouse Monoclonal
Secondary antibody type:
Polymer-HRP-Goat anti-Mouse

Kit Component

Component	Size	Concentration
Antigen Retrieval Buffer	100 mL	50×
Washing Buffer	100 mL ×2	20×
Blocking Buffer	5 mL	RTU
Primary Antibody	5 mL	RTU
Secondary Antibody	5 mL	RTU
Chromogen Component A	0.2 mL	RTU
Chromogen Component B	4 mL	RTU
Signal Enhancer	5 mL	RTU
Counter Staining Reagent	5 mL	RTU
Mounting Media	5 mL	RTU
Control Slide	1 slide (Optional)	FFPE
Datasheet	1 Copy	
Manual	1 Copy	

Storage Instructions

All the reagents are stored at 2-8°C. The kit is stable for 6 months from the date of receipt.

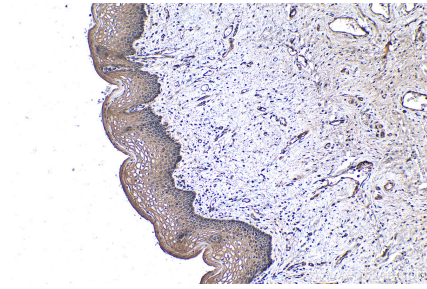
Background

Nuclear factor of kappa light polypeptide gene enhancer in B-cells inhibitor, alpha (NFKBIA, synonyms: IKBA, MAD-3, NFKBI). NFKB1 or NFKB2 is bound to REL, RELA, or RELB to form the NFKB complex. The NFKB complex is inhibited by I-kappa-B proteins (NFKBIA or NFKBIB), which inactivate NF-kappa-B by trapping it in the cytoplasm. Phosphorylation of serine residues on the I-kappa-B proteins by kinases (IKBKA, or IKBKB) marks them for destruction via the ubiquitination pathway, thereby allowing activation of the NF-kappa-B complex. Activated NFKB complex translocates into the nucleus and binds DNA at kappa-B-binding motifs such as 5-prime GGGRNYYCC 3-prime or 5-prime HGGARNYYCC 3-prime.

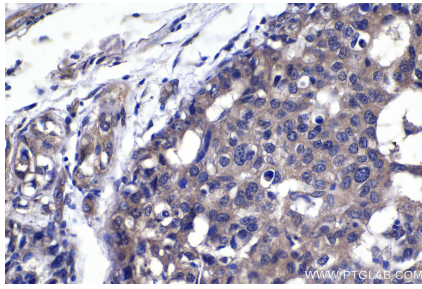
Synonyms

I kappa B alpha, IkappaBalpaha, IkB alpha, IKBA, MAD 3, MAD3, NF kappa B inhibitor alpha, NFKBI, NFKBIA

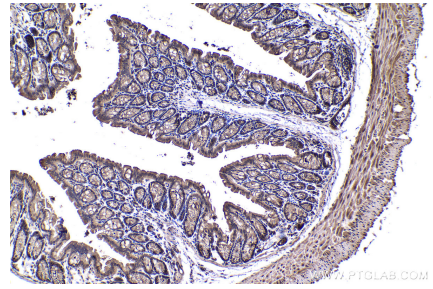
Selected Validation Data



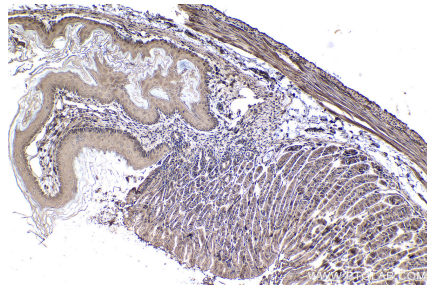
Immunohistochemical analysis of paraffin-embedded human cervical cancer tissue slide using KHC1368 (NFKBIA IHC Kit).



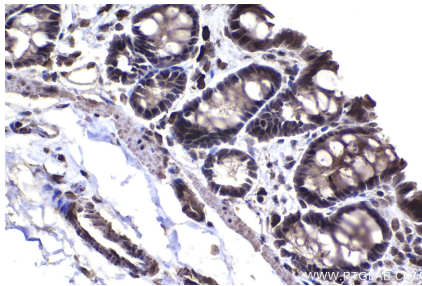
Immunohistochemical analysis of paraffin-embedded human breast cancer tissue slide using KHC1368 (NFKBIA IHC Kit).



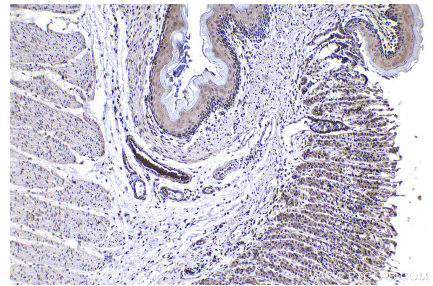
Immunohistochemical analysis of paraffin-embedded mouse colon tissue slide using KHC1368 (NFKBIA IHC Kit).



Immunohistochemical analysis of paraffin-embedded mouse stomach tissue slide using KHC1368 (NFKBIA IHC Kit).



Immunohistochemical analysis of paraffin-embedded rat colon tissue slide using KHC1368 (NFKBIA IHC Kit).



Immunohistochemical analysis of paraffin-embedded rat stomach tissue slide using KHC1368 (NFKBIA IHC Kit).