

IHCeasy[®] MCM6 Ready-To-Use IHC Kit

Catalog Number: **KHC1325**

General Information

Sample type:
FFPE tissue
Cited sample type:
Reactivity:
Human, Mouse, Rat
Cited Reactivity:

Assay type:
Immunohistochemistry
Primary antibody type:
Rabbit Polyclonal
Secondary antibody type:
Polymer-HRP-Goat anti-Rabbit

Kit Component

Component	Size	Concentration
Antigen Retrieval Buffer	100 mL	50×
Washing Buffer	100 mL ×2	20×
Blocking Buffer	5 mL	RTU
Primary Antibody	5 mL	RTU
Secondary Antibody	5 mL	RTU
Chromogen Component A	0.2 mL	RTU
Chromogen Component B	4 mL	RTU
Signal Enhancer	5 mL	RTU
Counter Staining Reagent	5 mL	RTU
Mounting Media	5 mL	RTU
Control Slide	1 slide (Optional)	FFPE
Datasheet	1 Copy	
Manual	1 Copy	

Storage Instructions

All the reagents are stored at 2-8°C. The kit is stable for 6 months from the date of receipt.

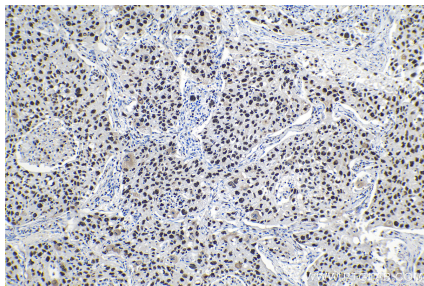
Background

The MCM genes were firstly identified in yeast defective in minichromosome maintenance and have since been shown to have roles in the progression of the cell cycle, and most of them are cell division control genes. MCM2-7 complex are suggested to be 'DNA licensing factors' which bind to the DNA after mitosis and enable DNA replication before being removed during S phase. Minichromosome maintenance 6 (MCM6) is one component of the MCM2-7 complex which is the putative replicative helicase essential for 'once per cell cycle' DNA replication initiation and elongation in eukaryotic cells. MCM6 single subunit forms homohexamer and contains an ATP-dependent and replication fork stimulated 3' to 5' DNA unwinding activity along with intrinsic DNA-dependent ATPase and ATP-binding activities.

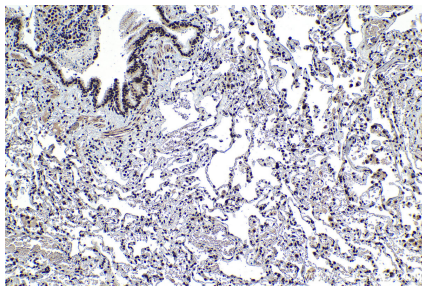
Synonyms

MCG40308, MCM6, Mis5, P105MCM

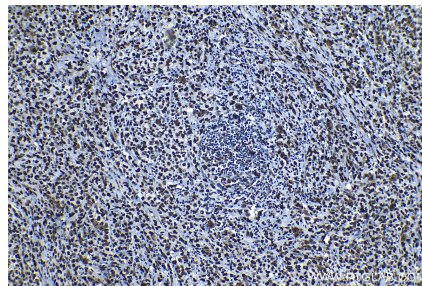
Selected Validation Data



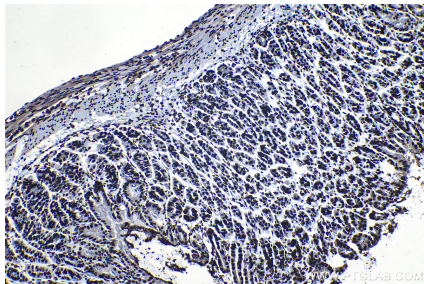
Immunohistochemical analysis of paraffin-embedded human lung cancer tissue slide using KHC1325 (MCM6 IHC Kit).



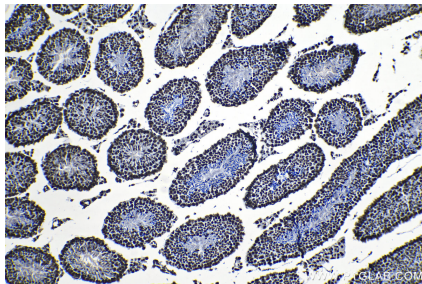
Immunohistochemical analysis of paraffin-embedded human lung tissue slide using KHC1325 (MCM6 IHC Kit).



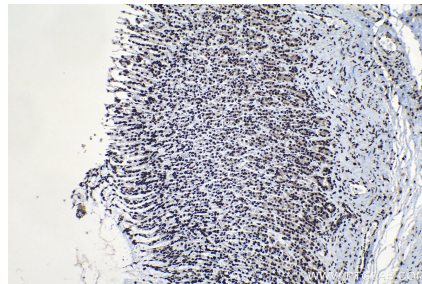
Immunohistochemical analysis of paraffin-embedded human lymphoma tissue slide using KHC1325 (MCM6 IHC Kit).



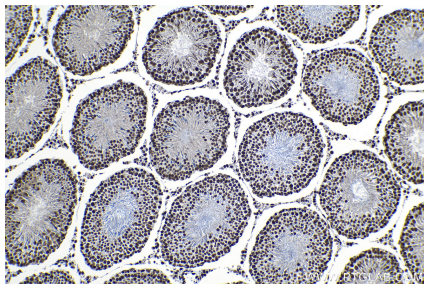
Immunohistochemical analysis of paraffin-embedded mouse stomach tissue slide using KHC1325 (MCM6 IHC Kit).



Immunohistochemical analysis of paraffin-embedded mouse testis tissue slide using KHC1325 (MCM6 IHC Kit).



Immunohistochemical analysis of paraffin-embedded rat stomach tissue slide using KHC1325 (MCM6 IHC Kit).



Immunohistochemical analysis of paraffin-embedded rat testis tissue slide using KHC1325 (MCM6 IHC Kit).