

IHCeasy[®] PIK3CA Ready-To-Use IHC Kit

Catalog Number: **KHC1059**

General Information

Sample type:
FFPE tissue
Cited sample type:
Reactivity:
Human, Mouse, Rat
Cited Reactivity:

Assay type:
Immunohistochemistry
Primary antibody type:
Mouse Monoclonal
Secondary antibody type:
Polymer-HRP-Goat anti-Mouse

Kit Component

Component	Size	Concentration
Antigen Retrieval Buffer	100 mL	50×
Washing Buffer	100 mL ×2	20×
Blocking Buffer	5 mL	RTU
Primary Antibody	5 mL	RTU
Secondary Antibody	5 mL	RTU
Chromogen Component A	0.2 mL	RTU
Chromogen Component B	4 mL	RTU
Signal Enhancer	5 mL	RTU
Counter Staining Reagent	5 mL	RTU
Mounting Media	5 mL	RTU
Control Slide	1 slide (Optional)	FFPE
Datasheet	1 Copy	
Manual	1 Copy	

Storage Instructions

All the reagents are stored at 2-8°C. The kit is stable for 6 months from the date of receipt.

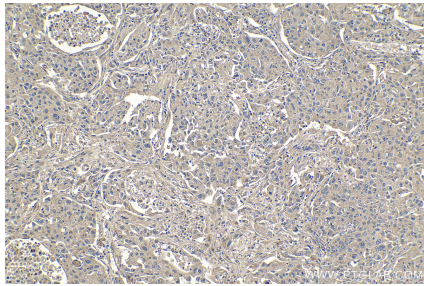
Background

PIK3CA belongs to the PI3/PI4-kinase family. It phosphorylates PtdIns, PtdIns4P and PtdIns(4,5)P₂ with a preference for PtdIns(4,5)P₂. Defects in PIK3CA are associated with colorectal cancer (CRC). Defects in PIK3CA are associated with breast cancer. Defects in PIK3CA are associated with ovarian cancer. Defects in PIK3CA may underlie hepatocellular carcinoma (HCC). Defects in PIK3CA are a cause of keratosis seborrheic (KERSEB).

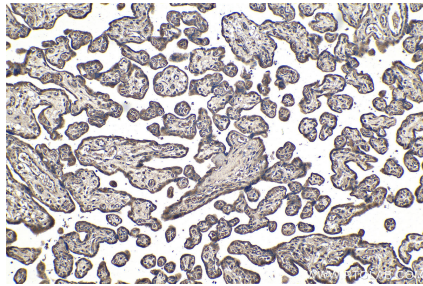
Synonyms

p110 alpha, PI3 Kinase p110 Alpha, PI3 kinase subunit alpha, PI3K, PI3K alpha, PI3K p110 (alpha), PI3K p110(alpha), PIK3CA, PtdIns 3 kinase subunit alpha

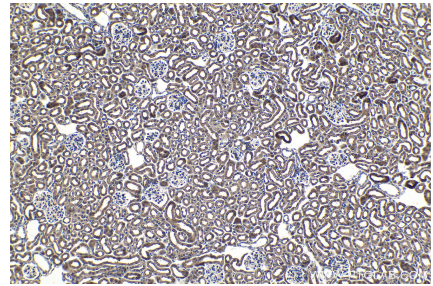
Selected Validation Data



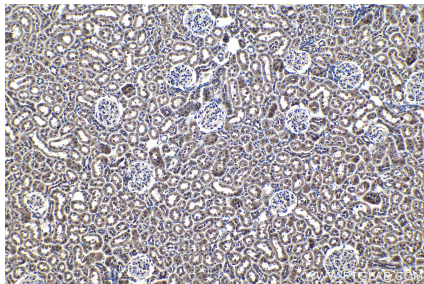
Immunohistochemical analysis of paraffin-embedded human lung cancer tissue slide using KHC1059 (PIK3CA IHC Kit).



Immunohistochemical analysis of paraffin-embedded human placenta tissue slide using KHC1059 (PIK3CA IHC Kit).



Immunohistochemical analysis of paraffin-embedded mouse kidney tissue slide using KHC1059 (PIK3CA IHC Kit).



Immunohistochemical analysis of paraffin-embedded rat kidney tissue slide using KHC1059 (PIK3CA IHC Kit).