

# IHCeasy<sup>®</sup> VCP Ready-To-Use IHC Kit

Catalog Number: **KHC0830**

## General Information

Sample type:  
FFPE tissue  
Cited sample type:  
Reactivity:  
Human, Mouse, Rat  
Cited Reactivity:

Assay type:  
Immunohistochemistry  
Primary antibody type:  
Rabbit Polyclonal  
Secondary antibody type:  
Polymer-HRP-Goat anti-Rabbit

## Kit Component

Component	Size	Concentration
Antigen Retrieval Buffer	100 mL	50×
Washing Buffer	100 mL ×2	20×
Blocking Buffer	5 mL	RTU
Primary Antibody	5 mL	RTU
Secondary Antibody	5 mL	RTU
Chromogen Component A	0.2 mL	RTU
Chromogen Component B	4 mL	RTU
Signal Enhancer	5 mL	RTU
Counter Staining Reagent	5 mL	RTU
Mounting Media	5 mL	RTU
Control Slide	1 slide (Optional)	FFPE
Datasheet	1 Copy	
Manual	1 Copy	

## Storage Instructions

All the reagents are stored at 2-8°C. The kit is stable for 6 months from the date of receipt.

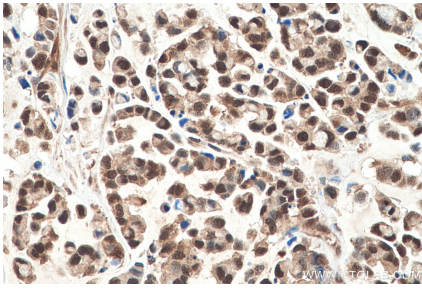
## Background

VCP (Valosin-containing protein), also known as TER ATPase and 15S Mg<sup>2+</sup>-ATPase p97 subunit, belongs to the AAA ATPase family. VCP was first identified as a result of attempts to clone a putative peptide hormone called valosin. It was found that the cloned cDNA encoded a ubiquitously expressed 90 kDa cytosolic protein, termed VCP, which showed none of the characteristics of a peptide hormone precursor. Defects in VCP are the cause of inclusion body myopathy with early-onset Paget disease and frontotemporal dementia (IBMPFD) and amyotrophic lateral sclerosis type 14 with or without frontotemporal dementia (ALS14).

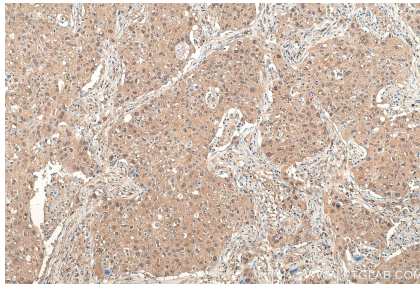
## Synonyms

15S Mg(2+) ATPase p97 subunit, IBMPFD, p97, TER ATPase, TERA, valosin containing protein, VCP

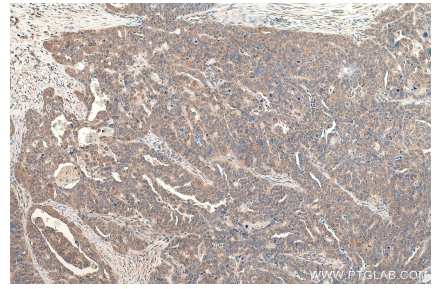
## Selected Validation Data



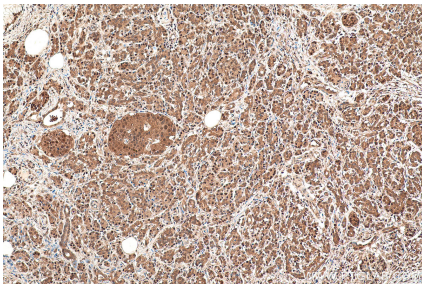
Immunohistochemical analysis of paraffin-embedded human colon cancer tissue slide using KHC0830 (VCP IHC Kit).



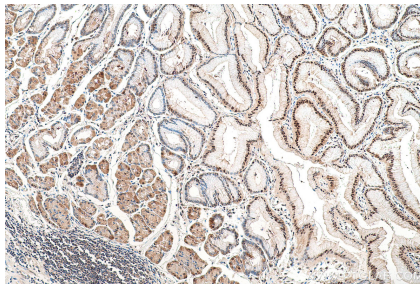
Immunohistochemical analysis of paraffin-embedded human lung cancer tissue slide using KHC0830 (VCP IHC Kit).



Immunohistochemical analysis of paraffin-embedded human ovary tumor tissue slide using KHC0830 (VCP IHC Kit).



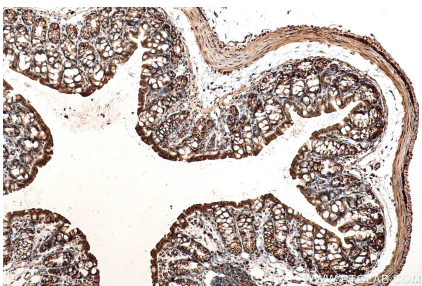
Immunohistochemical analysis of paraffin-embedded human pancreas cancer tissue slide using KHC0830 (VCP IHC Kit).



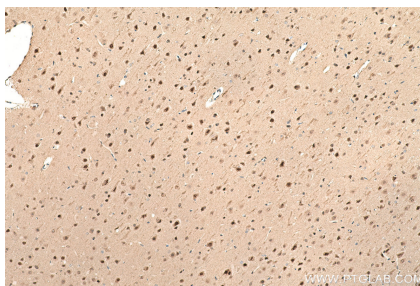
Immunohistochemical analysis of paraffin-embedded human stomach cancer tissue slide using KHC0830 (VCP IHC Kit).



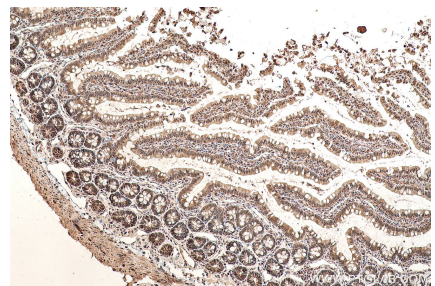
Immunohistochemical analysis of paraffin-embedded mouse brain tissue slide using KHC0830 (VCP IHC Kit).



Immunohistochemical analysis of paraffin-embedded mouse colon tissue slide using KHC0830 (VCP IHC Kit).



Immunohistochemical analysis of paraffin-embedded rat brain tissue slide using KHC0830 (VCP IHC Kit).



Immunohistochemical analysis of paraffin-embedded rat small intestine tissue slide using KHC0830 (VCP IHC Kit).