

IHCeasy[®] IGF1R Ready-To-Use IHC Kit

Catalog Number: **KHC0737**

General Information

Sample type:
FFPE tissue
Cited sample type:
Reactivity:
Human, Mouse, Rat
Cited Reactivity:

Assay type:
Immunohistochemistry
Primary antibody type:
Mouse Monoclonal
Secondary antibody type:
Polymer-HRP-Goat anti-Mouse

Kit Component

Component	Size	Concentration
Antigen Retrieval Buffer	100 mL	50×
Washing Buffer	100 mL ×2	20×
Blocking Buffer	5 mL	RTU
Primary Antibody	5 mL	RTU
Secondary Antibody	5 mL	RTU
Chromogen Component A	0.2 mL	RTU
Chromogen Component B	4 mL	RTU
Signal Enhancer	5 mL	RTU
Counter Staining Reagent	5 mL	RTU
Mounting Media	5 mL	RTU
Control Slide	1 slide (Optional)	FFPE
Datasheet	1 Copy	
Manual	1 Copy	

Storage Instructions

All the reagents are stored at 2-8°C. The kit is stable for 6 months from the date of receipt.

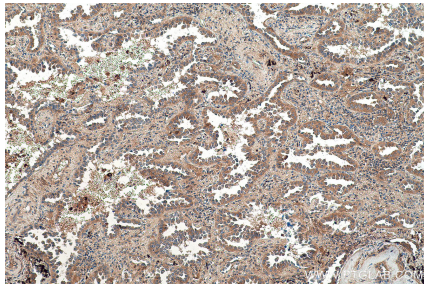
Background

IGF1R, also named as CD221, belongs to the protein kinase superfamily, Tyr protein kinase family and INS receptor subfamily. IGF1R binds INS-like growth factor 1 (IGF1) with a high affinity and IGF2 with a lower affinity. It has a tyrosine-protein kinase activity, which is necessary for the activation of the IGF1-stimulated downstream signaling cascade. When present in a hybrid receptor with INSR, IGF1R binds IGF1. The hybrid receptors composed of IGF1R and INSR isoform Long are activated with a high affinity by IGF1, with low affinity by IGF2 and not significantly activated by INS, and that hybrid receptors composed of IGF1R and INSR isoform Short are activated by IGF1, IGF2 and INS. In contrast, the hybrid receptors composed of IGF1R and INSR isoform Long and hybrid receptors composed of IGF1R and INSR isoform Short have similar binding characteristics, both bind IGF1 and have a low affinity for INS. Defects in IGF1R may be a cause in some cases of resistance to INS-like growth factor 1 (IGF1 resistance).

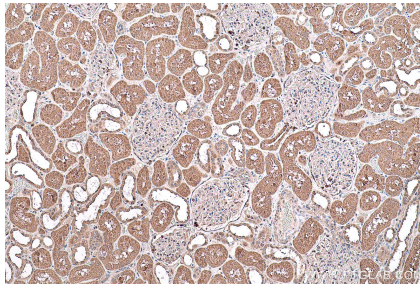
Synonyms

CD221, IGF I receptor, IGF1R, IGF1R Beta Chain, IGF1R-Specific, IGFIR, IGF-IR beta, IGFR, JTK13

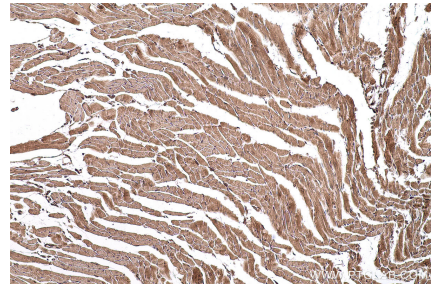
Selected Validation Data



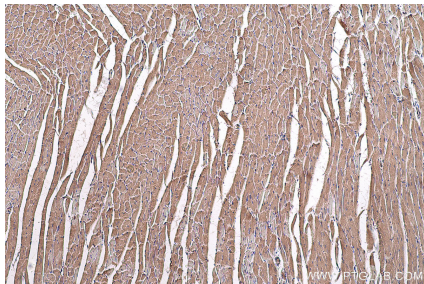
Immunohistochemical analysis of paraffin-embedded human lung cancer tissue slide using KHC0737 (IGF1R IHC Kit).



Immunohistochemical analysis of paraffin-embedded human kidney tissue slide using KHC0737 (IGF1R IHC Kit).



Immunohistochemical analysis of paraffin-embedded mouse heart tissue slide using KHC0737 (IGF1R IHC Kit).



Immunohistochemical analysis of paraffin-embedded rat heart tissue slide using KHC0737 (IGF1R IHC Kit).