

# IHCeasy<sup>®</sup> TAGLN Ready-To-Use IHC Kit

Catalog Number: **KHC0652**

## General Information

Sample type:  
FFPE tissue  
Cited sample type:  
Reactivity:  
Human, Rat  
Cited Reactivity:

Assay type:  
Immunohistochemistry  
Primary antibody type:  
Mouse Monoclonal  
Secondary antibody type:  
Polymer-HRP-Goat anti-Mouse

## Kit Component

Component	Size	Concentration
Antigen Retrieval Buffer	100 mL	50×
Washing Buffer	100 mL ×2	20×
Blocking Buffer	5 mL	RTU
Primary Antibody	5 mL	RTU
Secondary Antibody	5 mL	RTU
Chromogen Component A	0.2 mL	RTU
Chromogen Component B	4 mL	RTU
Signal Enhancer	5 mL	RTU
Counter Staining Reagent	5 mL	RTU
Mounting Media	5 mL	RTU
Control Slide	1 slide (Optional)	FFPE
Datasheet	1 Copy	
Manual	1 Copy	

## Storage Instructions

All the reagents are stored at 2-8°C. The kit is stable for 6 months from the date of receipt.

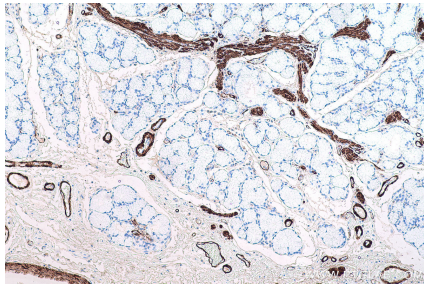
## Background

The transgelin family is a group of proteins that belong to actin-related corpnin superfamily. Of all three isoforms, transgelin 1 is the best characterized. Transgelin 1, also known as SM22 alpha, is a specific marker for differentiated smooth muscle cells. Transgelin 2, also known as SM22 beta, is expressed by both smooth muscle and non-smooth muscle cells in a temporally and spatially regulated pattern. Transgelin 3, also known as NP25, is only found in highly differentiated neuronal cells.

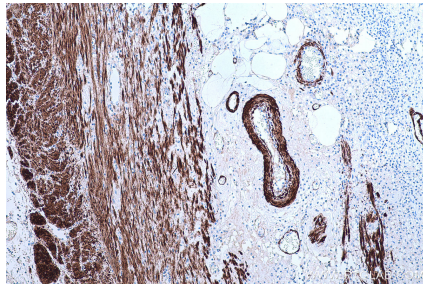
## Synonyms

22 kDa actin binding protein, SM22, SM22 alpha, SM22a, SM22-a, SM22alpha, SMCC, Smooth muscle protein 22 alpha, TAGLN, TAGLN1, transgelin, TRANSGELIN 1, transgelin/SM22, transgelin/SM22 alpha

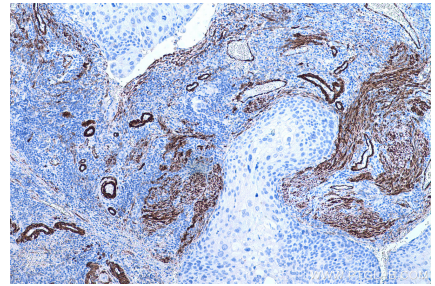
## Selected Validation Data



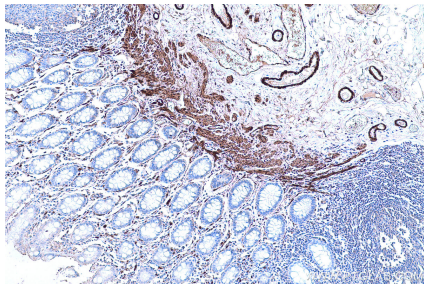
Immunohistochemical analysis of paraffin-embedded human stomach cancer tissue slide using KHC0652 (TAGLN IHC Kit).



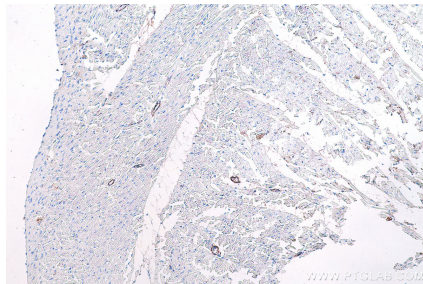
Immunohistochemical analysis of paraffin-embedded human appendicitis tissue slide using KHC0652 (TAGLN IHC Kit).



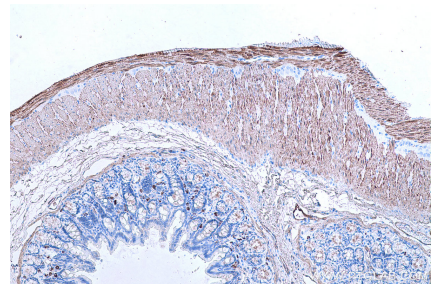
Immunohistochemical analysis of paraffin-embedded human cervical cancer tissue slide using KHC0652 (TAGLN IHC Kit).



Immunohistochemical analysis of paraffin-embedded human colon tissue slide using KHC0652 (TAGLN IHC Kit).



Immunohistochemical analysis of paraffin-embedded rat heart tissue slide using KHC0652 (TAGLN IHC Kit).



Immunohistochemical analysis of paraffin-embedded rat colon tissue slide using KHC0652 (TAGLN IHC Kit).