

# IHCeasy<sup>®</sup> AGT Ready-To-Use IHC Kit

Catalog Number: **KHC0490**

## General Information

Sample type: FFPE tissue	Assay type: Immunohistochemistry
Cited sample type:	Primary antibody type: Mouse Monoclonal
Reactivity: Human	Secondary antibody type: Polymer-HRP-Goat anti-Mouse
Cited Reactivity:	

## Kit Component

Component	Size	Concentration
Antigen Retrieval Buffer	100 mL	50×
Washing Buffer	100 mL × 2	20×
Blocking Buffer	5 mL	RTU
Primary Antibody	5 mL	RTU
Secondary Antibody	5 mL	RTU
Chromogen Component A	0.2 mL	RTU
Chromogen Component B	4 mL	RTU
Signal Enhancer	5 mL	RTU
Counter Staining Reagent	5 mL	RTU
Mounting Media	5 mL	RTU
Control Slide	1 slide (Optional)	FFPE
Datasheet	1 Copy	
Manual	1 Copy	

## Storage Instructions

All the reagents are stored at 2-8°C. The kit is stable for 6 months from the date of receipt.

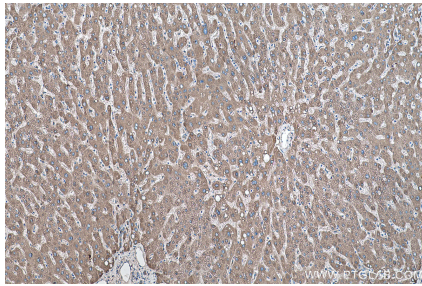
## Background

Angiotensinogen is a precursor of angiotensin II (Ang II), is expressed and synthesized largely in the liver and is cleaved by the enzyme renin in response to lowered blood pressure. It has a key role in mediating vascular constriction and regulating salt and fluid homeostasis. The resulting product, angiotensin I, is then cleaved by angiotensin converting enzyme (ACE) to generate the physiologically active enzyme angiotensin II. Mutations in this gene are associated with susceptibility to essential hypertension, and can cause renal tubular dysgenesis, a severe disorder of renal tubular development. Defects in this gene also have been associated with non-familial structural atrial fibrillation, and inflammatory bowel disease.

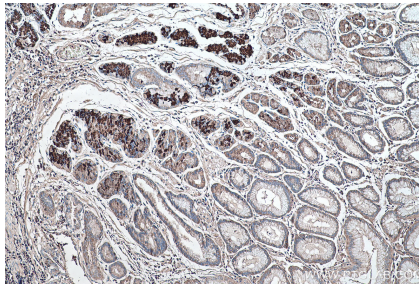
## Synonyms

AGT, Ang I Angiotensin 2, Ang II Angiotensin 3, Ang III, Angiotensin I, Angiotensin II, Angiotensin III, Angiotensinogen, ANHU, Des Asp[1] angiotensin II, FLJ92595, FLJ97926, Serpin A8, SERPINA8

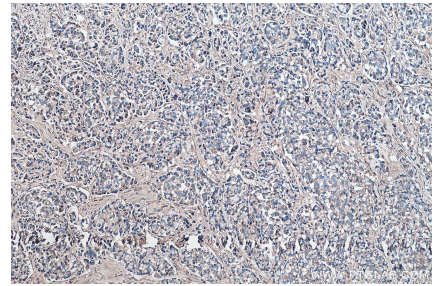
## Selected Validation Data



Immunohistochemical analysis of paraffin-embedded human liver tissue slide using KHC0490 (AGT IHC Kit).



Immunohistochemical analysis of paraffin-embedded human stomach cancer(NAT) tissue slide using KHC0490 (AGT IHC Kit).



Immunohistochemical analysis of paraffin-embedded human colon cancer tissue slide using KHC0490 (AGT IHC Kit).