

IHCeasy[®] ASGR1 Ready-To-Use IHC Kit

Catalog Number: **KHC0384**

General Information

| | |
|-----------------------------|---|
| Sample type: FFPE tissue | Assay type: Immunohistochemistry |
| Cited sample type: | Primary antibody type: Mouse Monoclonal |
| Reactivity: Human | Secondary antibody type: Polymer-HRP-Goat anti-Mouse |
| Cited Reactivity: | |

Kit Component

| Component | Size | Concentration |
|--------------------------|--------------------|---------------|
| Antigen Retrieval Buffer | 100 mL | 50× |
| Washing Buffer | 100 mL ×2 | 20× |
| Blocking Buffer | 5 mL | RTU |
| Primary Antibody | 5 mL | RTU |
| Secondary Antibody | 5 mL | RTU |
| Chromogen Component A | 0.2 mL | RTU |
| Chromogen Component B | 4 mL | RTU |
| Signal Enhancer | 5 mL | RTU |
| Counter Staining Reagent | 5 mL | RTU |
| Mounting Media | 5 mL | RTU |
| Control Slide | 1 slide (Optional) | FFPE |
| Datasheet | 1 Copy | |
| Manual | 1 Copy | |

Storage Instructions

All the reagents are stored at 2-8°C. The kit is stable for 6 months from the date of receipt.

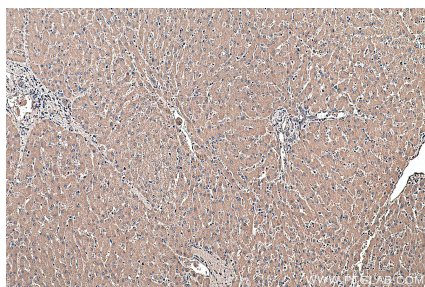
Background

Asialoglycoprotein receptor (ASGPR), also known as the hepatic galactose/N-acetylglucosamine (GlcNAc) receptor or Ashwell receptor, is a C-type lectin expressed exclusively in hepatic parenchymal cells. ASGPR consists of two subunits, a major subunit (ASGR1, HL-1) and a minor subunit (ASGR2, HL-2), and specifically recognizes terminal β -linked galactose or GlcNAc on circulating glycoproteins or cells. This receptor plays a critical role in serum glycoprotein homeostasis by mediating the endocytosis and lysosomal degradation of glycoproteins that contain terminal galactose or GlcNAc residues. ASGPR may facilitate hepatic infection by multiple viruses including hepatitis B, and is also a target for liver-specific drug delivery.

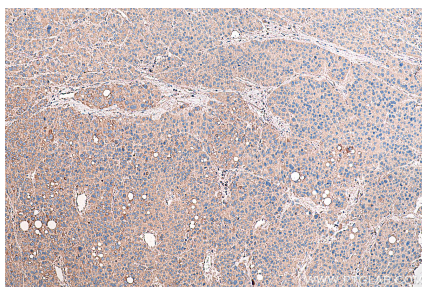
Synonyms

ASGP R 1, ASGPR, ASGPR 1, ASGR1, asialoglycoprotein receptor 1, CLEC4H1, Hepatic lectin H1, HL 1, Hs.12056

Selected Validation Data



Immunohistochemical analysis of paraffin-embedded human liver tissue slide using KHC0384 (ASGR1 IHC Kit).



Immunohistochemical analysis of paraffin-embedded human liver cancer tissue slide using KHC0384 (ASGR1 IHC Kit).