

IHCeasy[®] LDHB Ready-To-Use IHC Kit

Catalog Number: **KHC0324**

General Information

Sample type:
FFPE tissue
Cited sample type:
Reactivity:
Human, Mouse, Rat
Cited Reactivity:

Assay type:
Immunohistochemistry
Primary antibody type:
Rabbit Polyclonal
Secondary antibody type:
Polymer-HRP-Goat anti-Rabbit

Kit Component

Component	Size	Concentration
Antigen Retrieval Buffer	100 mL	50×
Washing Buffer	100 mL ×2	20×
Blocking Buffer	5 mL	RTU
Primary Antibody	5 mL	RTU
Secondary Antibody	5 mL	RTU
Chromogen Component A	0.2 mL	RTU
Chromogen Component B	4 mL	RTU
Signal Enhancer	5 mL	RTU
Counter Staining Reagent	5 mL	RTU
Mounting Media	5 mL	RTU
Control Slide	1 slide (Optional)	FFPE
Datasheet	1 Copy	
Manual	1 Copy	

Storage Instructions

All the reagents are stored at 2-8°C. The kit is stable for 6 months from the date of receipt.

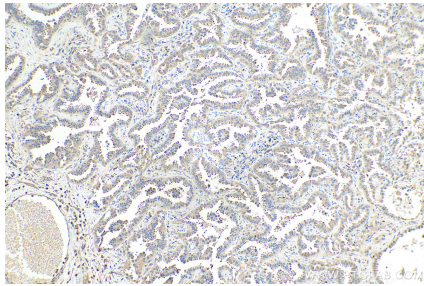
Background

LDHB, also named as LDH-H and NY-REN-46, belongs to the LDH/MDH superfamily. And LDH family. It is an enzyme which catalyzes the reversible conversion of pyruvate and NADH to lactate and NAD⁺ in the glycolytic pathway. It is glycolytic enzymes and it is positively regulated by mTOR.

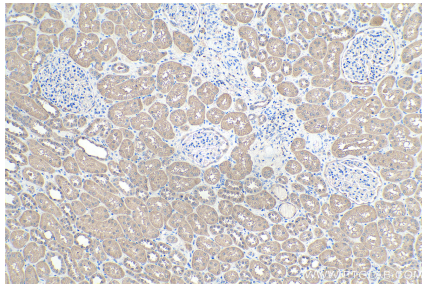
Synonyms

lactate dehydrogenase B, LDH B, LDH H, LDH heart subunit, LDHB, TRG 5

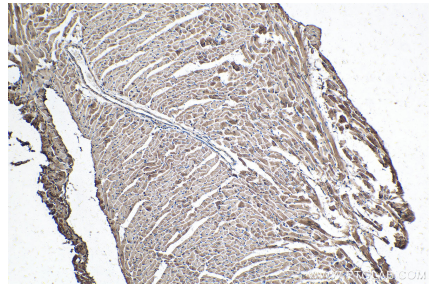
Selected Validation Data



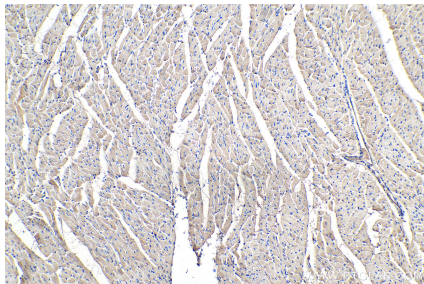
Immunohistochemical analysis of paraffin-embedded human lung cancer tissue slide using KHC0324 (LDHB IHC Kit).



Immunohistochemical analysis of paraffin-embedded human kidney tissue slide using KHC0324 (LDHB IHC Kit).



Immunohistochemical analysis of paraffin-embedded mouse heart tissue slide using KHC0324 (LDHB IHC Kit).



Immunohistochemical analysis of paraffin-embedded rat heart tissue slide using KHC0324 (LDHB IHC Kit).