

IHCeasy[®] DLK1 Ready-To-Use IHC Kit

Catalog Number: **KHC0306**

General Information

Sample type:
FFPE tissue
Cited sample type:
Reactivity:
Human, Mouse, Rat
Cited Reactivity:

Assay type:
Immunohistochemistry
Primary antibody type:
Mouse Monoclonal
Secondary antibody type:
Polymer-HRP-Goat anti-Mouse

Kit Component

Component	Size	Concentration
Antigen Retrieval Buffer	100 mL	50×
Washing Buffer	100 mL ×2	20×
Blocking Buffer	5 mL	RTU
Primary Antibody	5 mL	RTU
Secondary Antibody	5 mL	RTU
Chromogen Component A	0.2 mL	RTU
Chromogen Component B	4 mL	RTU
Signal Enhancer	5 mL	RTU
Counter Staining Reagent	5 mL	RTU
Mounting Media	5 mL	RTU
Control Slide	1 slide (Optional)	FFPE
Datasheet	1 Copy	
Manual	1 Copy	

Storage Instructions

All the reagents are stored at 2-8°C. The kit is stable for 6 months from the date of receipt.

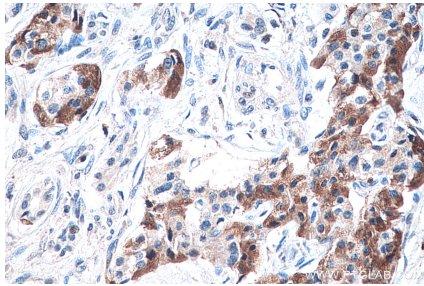
Background

DLK1, also named PREF1, FA1, or pG2, is a transmembrane protein belonging to the epidermal growth factor (EGF)-like superfamily. It contains six EGF-like repeats in the extracellular region. DLK1 is abundant in preadipocytes and regulate adipocyte differentiation negatively. Deficiency of DLK1 gives rise to growth retardation and accelerated adiposity in mouse model. Expression of DLK1 is found in tumors with neuroendocrine features that implies DLK1 may be involved in neuroendocrine differentiation. It has been reported overexpression of DLK1 could lead to the development of metabolic abnormalities by impairment of adipocyte function in mice.

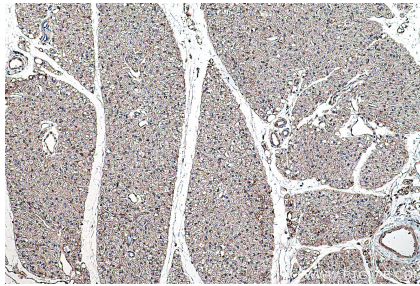
Synonyms

DLK, DLK 1, DLK1, FA1, pG2, Pref 1, PREF1, Protein delta homolog 1, ZOG

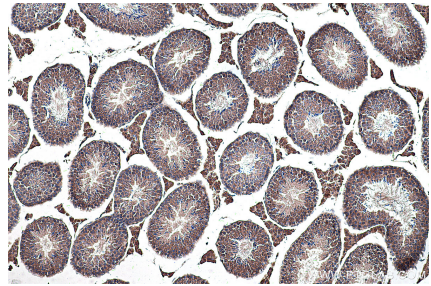
Selected Validation Data



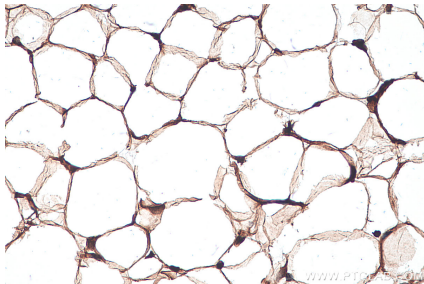
Immunohistochemical analysis of paraffin-embedded human pancreas cancer tissue slide using KHC0306 (DLK1 IHC Kit).



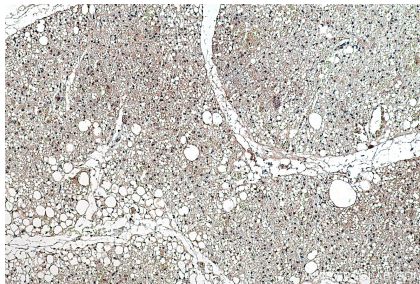
Immunohistochemical analysis of paraffin-embedded mouse brown adipose tissue slide using KHC0306 (DLK1 IHC Kit).



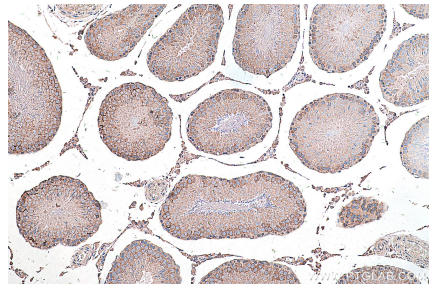
Immunohistochemical analysis of paraffin-embedded mouse testis tissue slide using KHC0306 (DLK1 IHC Kit).



Immunohistochemical analysis of paraffin-embedded mouse testis tissue slide using KHC0306 (DLK1 IHC Kit).



Immunohistochemical analysis of paraffin-embedded rat brown adipose tissue slide using KHC0306 (DLK1 IHC Kit).



Immunohistochemical analysis of paraffin-embedded rat testis tissue slide using KHC0306 (DLK1 IHC Kit).