

# IHCeasy<sup>®</sup> Cytokeratin 7 Ready-To-Use IHC Kit

Catalog Number: **KHC0204**

## General Information

Sample type:  
FFPE tissue  
Cited sample type:  
Reactivity:  
Human, Mouse, Rat  
Cited Reactivity:

Assay type:  
Immunohistochemistry  
Primary antibody type:  
Rabbit Polyclonal  
Secondary antibody type:  
Polymer-HRP-Goat anti-Rabbit

## Kit Component

Component	Size	Concentration
Antigen Retrieval Buffer	100 mL	50×
Washing Buffer	100 mL ×2	20×
Blocking Buffer	5 mL	RTU
Primary Antibody	5 mL	RTU
Secondary Antibody	5 mL	RTU
Chromogen Component A	0.2 mL	RTU
Chromogen Component B	4 mL	RTU
Signal Enhancer	5 mL	RTU
Counter Staining Reagent	5 mL	RTU
Mounting Media	5 mL	RTU
Control Slide	1 slide (Optional)	FFPE
Datasheet	1 Copy	
Manual	1 Copy	

## Storage Instructions

All the reagents are stored at 2-8°C. The kit is stable for 6 months from the date of receipt.

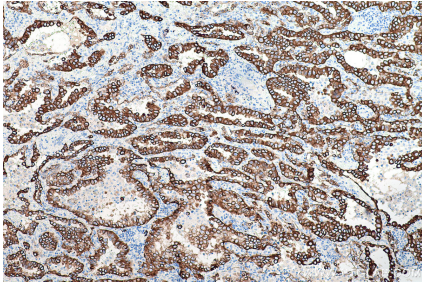
## Background

Keratins are a large family of proteins that form the intermediate filament cytoskeleton of epithelial cells, which are classified into two major sequence types. Type I keratins are a group of acidic intermediate filament proteins, including K9-K23, and the hair keratins Ha1-Ha8. Type II keratins are the basic or neutral counterparts to the acidic type I keratins, including K1-K8, and the hair keratins, Hb1-Hb6. KRT7, also named as cytokeratin 7, is one member of type II basic cytokeratin. It is specifically expressed in the simple epithelia lining the cavities of the internal organs and in the gland ducts and blood vessels, and their neoplasms. KRT7 is marker of epithelial tissues, but not present in carcinomas of stratified squamous cell origin.

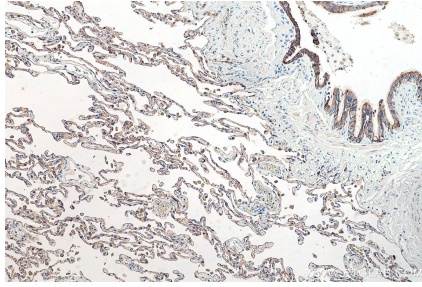
## Synonyms

Cell and organelle markers, CK 7, CK7, Cytokeratin 7, Cytoskeleton Marker, K2C7, K7, keratin 7, KRT7, Sarcolectin, SCL, Type II keratin Kb7

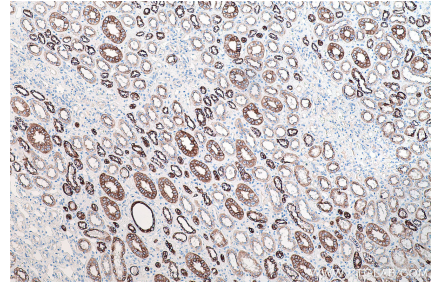
## Selected Validation Data



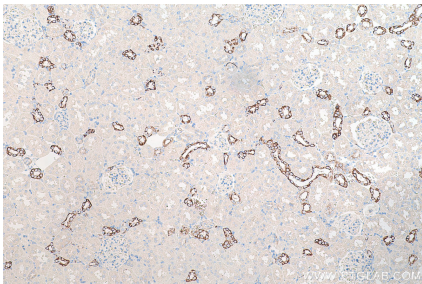
Immunohistochemical analysis of paraffin-embedded human lung cancer tissue slide using KHC0204 (Cytokeratin 7 IHC Kit).



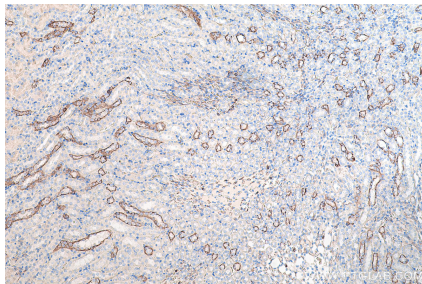
Immunohistochemical analysis of paraffin-embedded human lung tissue slide using KHC0204 (Cytokeratin 7 IHC Kit).



Immunohistochemical analysis of paraffin-embedded human kidney tissue slide using KHC0204 (Cytokeratin 7 IHC Kit).



Immunohistochemical analysis of paraffin-embedded rat kidney tissue slide using KHC0204 (Cytokeratin 7 IHC Kit).



Immunohistochemical analysis of paraffin-embedded mouse kidney tissue slide using KHC0204 (Cytokeratin 7 IHC Kit).