

# IHCeasy<sup>®</sup> Calbindin-D28k Ready-To-Use IHC Kit

Catalog Number: **KHC0188**

## General Information

Sample type:  
FFPE tissue  
Cited sample type:  
Reactivity:  
Human, Mouse, Rat  
Cited Reactivity:

Assay type:  
Immunohistochemistry  
Primary antibody type:  
Mouse Monoclonal  
Secondary antibody type:  
Polymer-HRP-Goat anti-Mouse

## Kit Component

Component	Size	Concentration
Antigen Retrieval Buffer	100 mL	50×
Washing Buffer	100 mL ×2	20×
Blocking Buffer	5 mL	RTU
Primary Antibody	5 mL	RTU
Secondary Antibody	5 mL	RTU
Chromogen Component A	0.2 mL	RTU
Chromogen Component B	4 mL	RTU
Signal Enhancer	5 mL	RTU
Counter Staining Reagent	5 mL	RTU
Mounting Media	5 mL	RTU
Control Slide	1 slide (Optional)	FFPE
Datasheet	1 Copy	
Manual	1 Copy	

## Storage Instructions

All the reagents are stored at 2-8°C. The kit is stable for 6 months from the date of receipt.

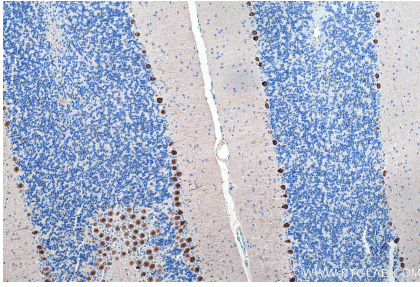
## Background

Calbindin-D28k is a member of the calcium-binding protein superfamily that includes calmodulin and troponin C. It is a cytosolic calcium binding protein highly expressed in the distal tubule, intestines, central nervous system, primary murine osteoblast cells and in several other organs. It plays an important role in the intracellular calcium homeostasis, its strong buffering capacity prevents cytotoxic effect of high concentration of free calcium in kidney, brain, pancreas, and intestine.

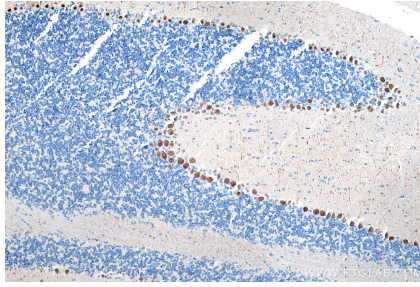
## Synonyms

CAB27, CALB, CALB1, Calbindin, calbindin 1, 28kDa, Calbindin D28, Calbindin-D28k, D 28K

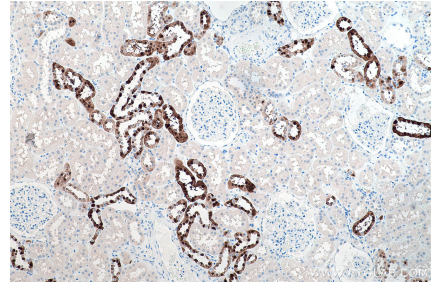
## Selected Validation Data



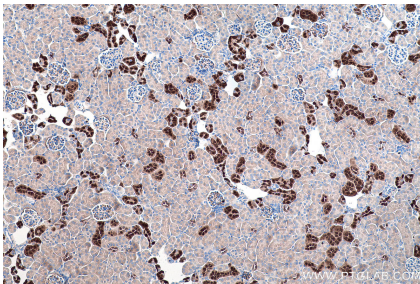
Immunohistochemical analysis of paraffin-embedded rat cerebellum tissue slide using KHC0188 (Calbindin-D28k IHC Kit).



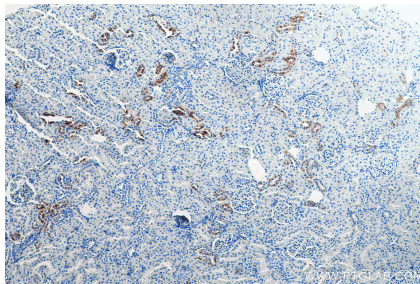
Immunohistochemical analysis of paraffin-embedded mouse cerebellum tissue slide using KHC0188 (Calbindin-D28k IHC Kit).



Immunohistochemical analysis of paraffin-embedded human kidney tissue slide using KHC0188 (Calbindin-D28k IHC Kit).



Immunohistochemical analysis of paraffin-embedded mouse kidney tissue slide using KHC0188 (Calbindin-D28k IHC Kit).



Immunohistochemical analysis of paraffin-embedded rat kidney tissue slide using KHC0188 (Calbindin-D28k IHC Kit).