

IHCeasy[®] EIF3D Ready-To-Use IHC Kit

Catalog Number: **KHC0169**

General Information

Sample type:
FFPE tissue
Cited sample type:
Reactivity:
Human, Mouse, Rat
Cited Reactivity:

Assay type:
Immunohistochemistry
Primary antibody type:
Mouse Monoclonal
Secondary antibody type:
Polymer-HRP-Goat anti-Mouse

Kit Component

Component	Size	Concentration
Antigen Retrieval Buffer	100 mL	50×
Washing Buffer	100 mL ×2	20×
Blocking Buffer	5 mL	RTU
Primary Antibody	5 mL	RTU
Secondary Antibody	5 mL	RTU
Chromogen Component A	0.2 mL	RTU
Chromogen Component B	4 mL	RTU
Signal Enhancer	5 mL	RTU
Counter Staining Reagent	5 mL	RTU
Mounting Media	5 mL	RTU
Control Slide	1 slide (Optional)	FFPE
Datasheet	1 Copy	
Manual	1 Copy	

Storage Instructions

All the reagents are stored at 2-8°C. The kit is stable for 6 months from the date of receipt.

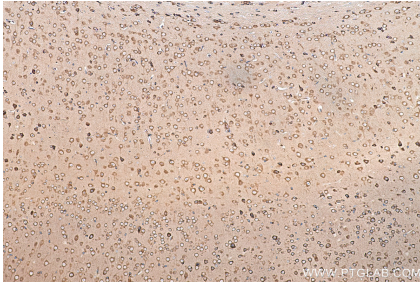
Background

The mammalian translation initiation factor 3 (eIF3), is a multiprotein complex of ~600 kDa that binds to the 40 S ribosome and promotes the binding of methionyl-tRNA_i and mRNA. The EIF3S7(p66) is the major RNA binding subunit in this complex. Human eIF3-p66 shares 64% sequence identity with a hypothetical *Caenorhabditis elegans* protein, presumably the p66 homolog. Deletion analyses of recombinant derivatives of eIF3-p66 show that the RNA-binding domain lies within an N-terminal 71-amino acid region rich in lysine and arginine.

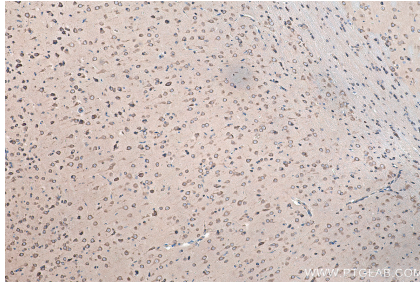
Synonyms

eIF 3 zeta, eIF3 p66, eIF3 zeta, EIF3D, EIF3S7

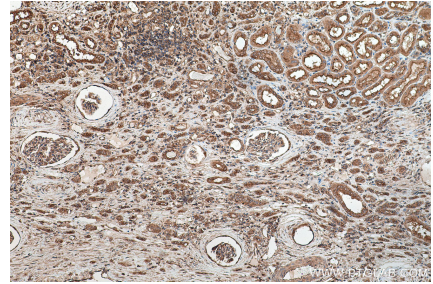
Selected Validation Data



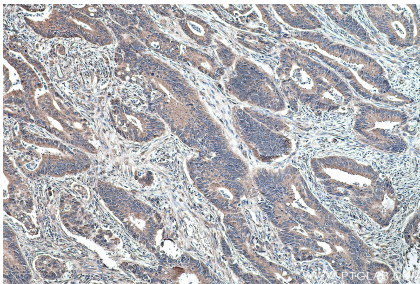
Immunohistochemical analysis of paraffin-embedded mouse brain tissue slide using KHC0169 (EIF3D IHC Kit).



Immunohistochemical analysis of paraffin-embedded rat brain tissue slide using KHC0169 (EIF3D IHC Kit).



Immunohistochemical analysis of paraffin-embedded human renal cell carcinoma tissue slide using KHC0169 (EIF3D IHC Kit).



Immunohistochemical analysis of paraffin-embedded human colon cancer tissue slide using KHC0169 (EIF3D IHC Kit).