

# IHCeasy<sup>®</sup> p38 MAPK Ready-To-Use IHC Kit

Catalog Number: **KHC0118**

## General Information

Sample type:  
FFPE tissue  
Cited sample type:  
Reactivity:  
Human, Mouse, Rat  
Cited Reactivity:

Assay type:  
Immunohistochemistry  
Primary antibody type:  
Mouse Monoclonal  
Secondary antibody type:  
Polymer-HRP-Goat anti-Mouse

## Kit Component

Component	Size	Concentration
Antigen Retrieval Buffer	100 mL	50×
Washing Buffer	100 mL × 2	20×
Blocking Buffer	5 mL	RTU
Primary Antibody	5 mL	RTU
Secondary Antibody	5 mL	RTU
Chromogen Component A	0.2 mL	RTU
Chromogen Component B	4 mL	RTU
Signal Enhancer	5 mL	RTU
Counter Staining Reagent	5 mL	RTU
Mounting Media	5 mL	RTU
Control Slide	1 slide (Optional)	FFPE
Datasheet	1 Copy	
Manual	1 Copy	

## Storage Instructions

All the reagents are stored at 2-8°C. The kit is stable for 6 months from the date of receipt.

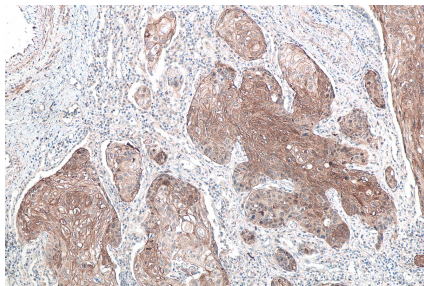
## Background

MAPK14 (mitogen-activated protein kinase 14) is also named as SAPK2A, p38 MAPK, CSBP1, RK, p38, EXIP, Mxi2, CSBP2, PRKM14, PRKM15, CSPB1, p38ALPHA and belongs to the MAP kinase subfamily. MAPK14-signaling is a central pathway for the integration of instructive signals in dendritic cells for T(H)17 differentiation and inflammation(PMID:22231518). It plays an important role in the regulation of hematopoietic stem cell self-renewal in vitro and inhibition of MAPK14 activation with a small molecule inhibitor may represent a novel approach to promote ex vivo expansion of hematopoietic stem cell.

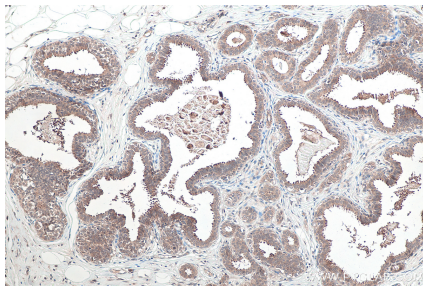
## Synonyms

CSAID binding protein, CSBP, CSBP1, CSBP2, CSPB1, EXIP, MAP kinase 14, MAP kinase MXI2, MAP kinase p38 alpha, MAPK 14, MAPK14, MAX interacting protein 2, Mxi2, p38, p38 MAPK, p38ALPHA, PRKM14, PRKM15, RK, SAPK2A

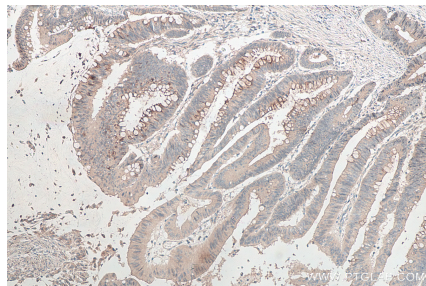
## Selected Validation Data



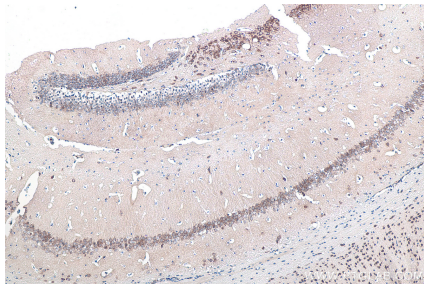
Immunohistochemical analysis of paraffin-embedded human lung cancer tissue slide using KHC0118 (p38 MAPK IHC Kit).



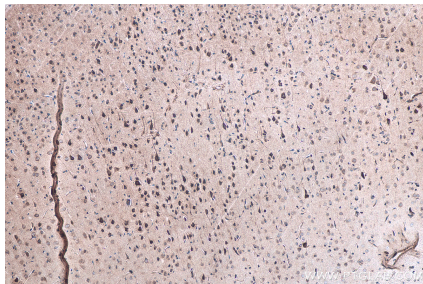
Immunohistochemical analysis of paraffin-embedded human breast cancer tissue slide using KHC0118 (p38 MAPK IHC Kit).



Immunohistochemical analysis of paraffin-embedded human colon cancer tissue slide using KHC0118 (p38 MAPK IHC Kit).



Immunohistochemical analysis of paraffin-embedded mouse brain tissue slide using KHC0118 (p38 MAPK IHC Kit).



Immunohistochemical analysis of paraffin-embedded rat brain tissue slide using KHC0118 (p38 MAPK IHC Kit).