

IHCeasy[®] TNC/Tenascin-C Ready-To-Use IHC Kit

Catalog Number: **KHC0113**

General Information

Sample type:
FFPE tissue
Cited sample type:
Reactivity:
Human, Mouse, Rat
Cited Reactivity:

Assay type:
Immunohistochemistry
Primary antibody type:
Mouse Monoclonal
Secondary antibody type:
Polymer-HRP-Goat anti-Mouse

Kit Component

Component	Size	Concentration
Antigen Retrieval Buffer	100 mL	50×
Washing Buffer	100 mL ×2	20×
Blocking Buffer	5 mL	RTU
Primary Antibody	5 mL	RTU
Secondary Antibody	5 mL	RTU
Chromogen Component A	0.2 mL	RTU
Chromogen Component B	4 mL	RTU
Signal Enhancer	5 mL	RTU
Counter Staining Reagent	5 mL	RTU
Mounting Media	5 mL	RTU
Control Slide	1 slide (Optional)	FFPE
Datasheet	1 Copy	
Manual	1 Copy	

Storage Instructions

All the reagents are stored at 2-8°C. The kit is stable for 6 months from the date of receipt.

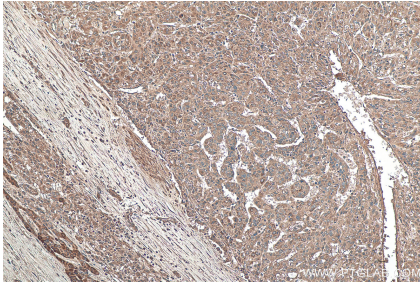
Background

Tenascin-C (TNC) is a large hexameric extracellular matrix glycoprotein of the tenascin family. It is a multimodular protein containing multiple epidermal growth factor (EGF)-like repeats and fibronectin type III (FN III) domains. Tenascin-C is highly expressed during embryonic development, particularly in the developing central nervous system, around motile cells and at epithelial-mesenchymal interaction sites. In adult tissues, the expression and the distribution of TNC are typically limited under normal physiological conditions. It is upregulated during injury, inflammation, regeneration, and cancer. Tenascin-C is a diverse protein that can produce different functions including regulating cell adhesion, migration and proliferation.

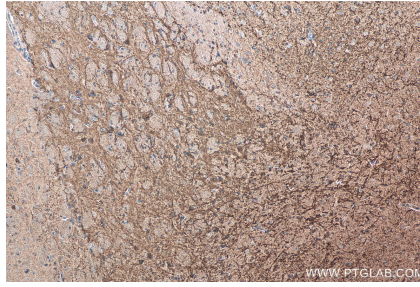
Synonyms

Cytotactin, GMEM, GP 150 225, Hexabrachion, HXB, JI, Myotendinous antigen, Neuronectin, Tenascin, tenascin C, TN, TN C, TNC

Selected Validation Data



Immunohistochemical analysis of paraffin-embedded human liver cancer tissue slide using KHC0113 (TNC/Tenascin-C IHC Kit).



Immunohistochemical analysis of paraffin-embedded rat brain tissue slide using KHC0113 (TNC/Tenascin-C IHC Kit).