

IHCeasy[®] Integrin alpha-1 Ready-To-Use IHC Kit

Catalog Number: **KHC0111**

General Information

Sample type:
FFPE tissue
Cited sample type:
Reactivity:
Human
Cited Reactivity:

Assay type:
Immunohistochemistry
Primary antibody type:
Rabbit Polyclonal
Secondary antibody type:
Polymer-HRP-Goat anti-Rabbit

Kit Component

Component	Size	Concentration
Antigen Retrieval Buffer	100 mL	50×
Washing Buffer	100 mL ×2	20×
Blocking Buffer	5 mL	RTU
Primary Antibody	5 mL	RTU
Secondary Antibody	5 mL	RTU
Chromogen Component A	0.2 mL	RTU
Chromogen Component B	4 mL	RTU
Signal Enhancer	5 mL	RTU
Counter Staining Reagent	5 mL	RTU
Mounting Media	5 mL	RTU
Control Slide	1 slide (Optional)	FFPE
Datasheet	1 Copy	
Manual	1 Copy	

Storage Instructions

All the reagents are stored at 2-8°C. The kit is stable for 6 months from the date of receipt.

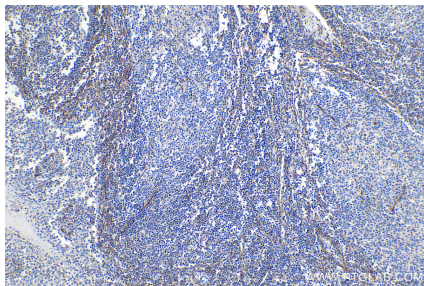
Background

The integrins are a superfamily of cell adhesion receptors that bind to extracellular matrix ligands, cell-surface ligands, and soluble ligands. They are transmembrane $\alpha\beta$ heterodimers and at least 24 distinct integrin heterodimers are formed by the combination of 18 α and eight β known subunits. In addition to mediating cell adhesion, integrins also play important roles in modulating signal transduction pathways that control cellular responses including migration, proliferation, differentiation, and apoptosis. Integrin alpha-1 (ITGA1, CD49a) combines with the beta 1 subunit (ITGB1, CD29) to form a cell-surface receptor for collagen and laminin. This receptor is involved in cell-cell adhesion and may play a role in inflammation and fibrosis.

Synonyms

CD49a, Integrin alpha 1, integrin, alpha 1, ITGA1, Laminin and collagen receptor, VLA 1, VLA1

Selected Validation Data



Immunohistochemical analysis of paraffin-embedded human tonsillitis tissue slide using KHC0111 (Integrin alpha-1 IHC Kit).