

IHCeasy[®] STING Ready-To-Use IHC Kit

Catalog Number: **KHC0060**

General Information

Sample type:
FFPE tissue
Cited sample type:
Reactivity:
Human, Mouse
Cited Reactivity:

Assay type:
Immunohistochemistry
Primary antibody type:
Rabbit Recombinant
Secondary antibody type:
Polymer-HRP-Goat anti-Rabbit

Kit Component

Component	Size	Concentration
Antigen Retrieval Buffer	100 mL	50×
Washing Buffer	100 mL ×2	20×
Blocking Buffer	5 mL	RTU
Primary Antibody	5 mL	RTU
Secondary Antibody	5 mL	RTU
Chromogen Component A	0.2 mL	RTU
Chromogen Component B	4 mL	RTU
Signal Enhancer	5 mL	RTU
Counter Staining Reagent	5 mL	RTU
Mounting Media	5 mL	RTU
Control Slide	1 slide (Optional)	FFPE
Datasheet	1 Copy	
Manual	1 Copy	

Storage Instructions

All the reagents are stored at 2-8°C. The kit is stable for 6 months from the date of receipt.

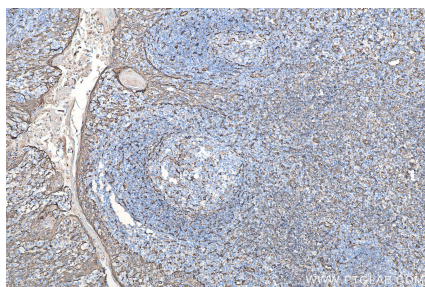
Background

STING, also named as TMEM173, ERIS, MITA and MPYS, is a facilitator of innate immune signaling that promotes the production of type I IFN (IFN-alpha and IFN-beta). TMEM173 mediates death signaling via activation of the extracellular signal-regulated kinase (ERK) pathway.

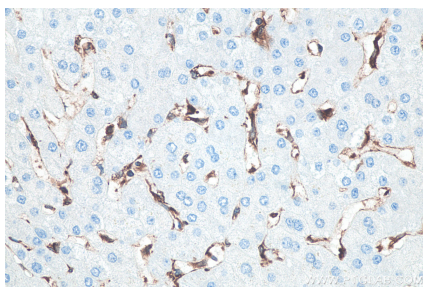
Synonyms

FLJ38577, hMITA, hSTING, Mediator of IRF3 activation, MITA, MPYS, NET23, STING, TMEM173, TMEM173/STING, transmembrane protein 173

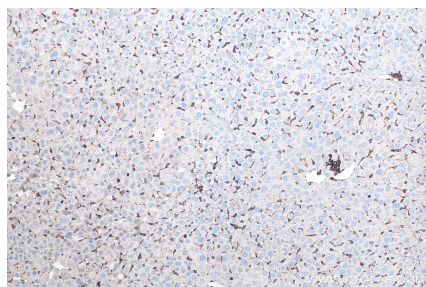
Selected Validation Data



Immunohistochemical analysis of paraffin-embedded human tonsillitis tissue slide using KHC0060 (STING IHC Kit).



Immunohistochemical analysis of paraffin-embedded human liver tissue slide using KHC0060 (STING IHC Kit).



Immunohistochemical analysis of paraffin-embedded mouse liver tissue slide using KHC0060 (STING IHC Kit).