

# IHCeasy<sup>®</sup> SOD1 Ready-To-Use IHC Kit

Catalog Number: **KHC0052**

## General Information

Sample type:  
FFPE tissue  
Cited sample type:  
Reactivity:  
Human, Mouse, Rat  
Cited Reactivity:

Assay type:  
Immunohistochemistry  
Primary antibody type:  
Mouse Monoclonal  
Secondary antibody type:  
Polymer-HRP-Goat anti-Mouse

## Kit Component

Component	Size	Concentration
Antigen Retrieval Buffer	100 mL	50×
Washing Buffer	100 mL ×2	20×
Blocking Buffer	5 mL	RTU
Primary Antibody	5 mL	RTU
Secondary Antibody	5 mL	RTU
Chromogen Component A	0.2 mL	RTU
Chromogen Component B	4 mL	RTU
Signal Enhancer	5 mL	RTU
Counter Staining Reagent	5 mL	RTU
Mounting Media	5 mL	RTU
Control Slide	1 slide (Optional)	FFPE
Datasheet	1 Copy	
Manual	1 Copy	

## Storage Instructions

All the reagents are stored at 2-8°C. The kit is stable for 6 months from the date of receipt.

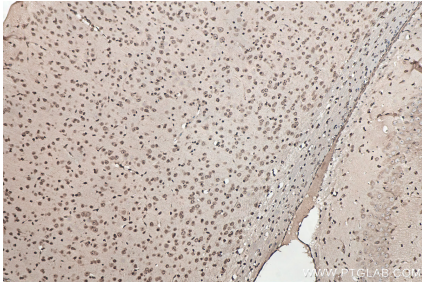
## Background

SOD1 (Superoxide dismutase 1) binds copper and zinc ions and is one of two isozymes responsible for destroying free uperoxide radicals in the body. Mutations of SOD1 have been implicated as causes of familial amyotrophic lateral sclerosis.

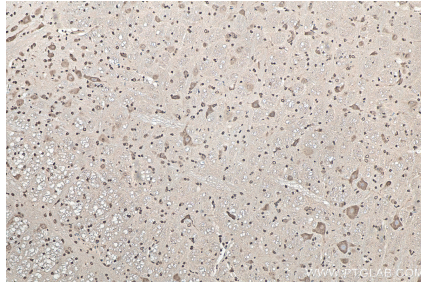
## Synonyms

hSOD, IPOA, SOD, SOD1, Superoxide dismutase [Cu Zn]

## Selected Validation Data



Immunohistochemical analysis of paraffin-embedded mouse brain tissue slide using KHC0052 (SOD1 IHC Kit).



Immunohistochemical analysis of paraffin-embedded rat cerebellum tissue slide using KHC0052 (SOD1 IHC Kit).