

# IHCeasy<sup>®</sup> Beta Catenin Ready-To-Use IHC Kit

Catalog Number: KHC0008

## General Information

Sample type:  
FFPE tissue  
Cited sample type:  
Reactivity:  
Human, Mouse, Rat  
Cited Reactivity:

Assay type:  
Immunohistochemistry  
Primary antibody type:  
Mouse Monoclonal  
Secondary antibody type:  
Polymer-HRP-Goat anti-Mouse

## Kit Component

Component	Size	Concentration
Antigen Retrieval Buffer	100 mL	50×
Washing Buffer	100 mL ×2	20×
Blocking Buffer	5 mL	RTU
Primary Antibody	5 mL	RTU
Secondary Antibody	5 mL	RTU
Chromogen Component A	0.2 mL	RTU
Chromogen Component B	4 mL	RTU
Signal Enhancer	5 mL	RTU
Counter Staining Reagent	5 mL	RTU
Mounting Media	5 mL	RTU
Control Slide	1 slide (Optional)	FFPE
Datasheet	1 Copy	
Manual	1 Copy	

## Storage Instructions

All the reagents are stored at 2-8°C. The kit is stable for 6 months from the date of receipt.

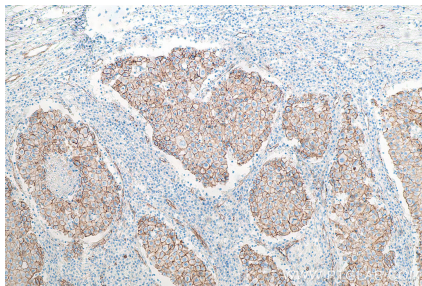
## Background

$\beta$ -Catenin, also known as CTNNB1, is an evolutionarily conserved, multifunctional intracellular protein.  $\beta$ -Catenin was originally identified in cell adherens junctions (AJs) where it functions to bridge the cytoplasmic domain of cadherins to  $\alpha$ -catenin and the actin cytoskeleton. Besides its essential role in the AJs,  $\beta$ -catenin is also a key downstream component of the canonical Wnt pathway that plays diverse and critical roles in embryonic development and adult tissue homeostasis. The Wnt/ $\beta$ -catenin pathway is also involved in the activation of other intracellular messengers such as calcium fluxes, JNK, and SRC kinases. Deregulation of  $\beta$ -catenin activity is associated with multiple diseases including cancers.

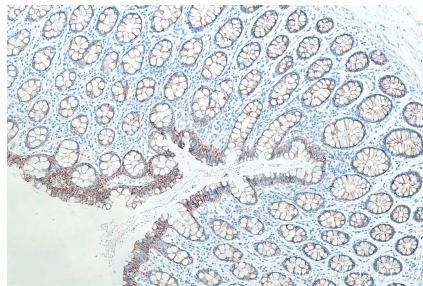
## Synonyms

b cat, Beta catenin, beta-Catenin, Catenin beta 1, CTNNB, CTNNB1, PRO2286,  $\beta$ -Catenin

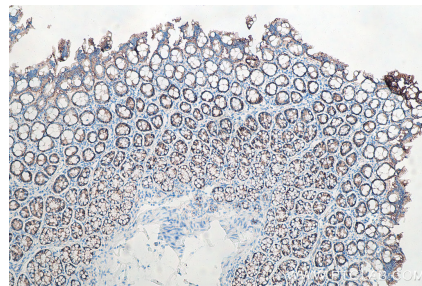
## Selected Validation Data



Immunohistochemical analysis of paraffin-embedded human breast cancer tissue slide using KHC0008 (Beta Catenin IHC Kit)



Immunohistochemical analysis of paraffin-embedded human colon tissue slide using KHC0008 (Beta Catenin IHC Kit)



Immunohistochemical analysis of paraffin-embedded rat colon tissue slide using KHC0008 (Beta Catenin IHC Kit)