

Catalog Number: HZ-1325

Data Sheet

HumanKine® IL-22 (Recombinant Human)



Animal Component-Free

Human cell expressed

Tag-Free

Endotoxin Free

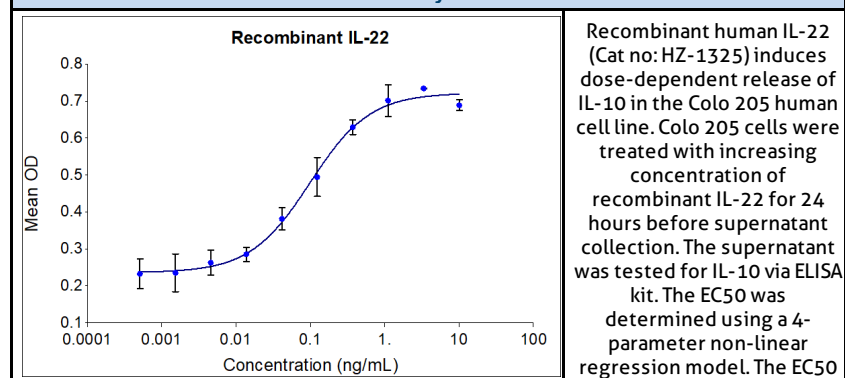
Product Description

| | |
|-------------------|---|
| Alternative Names | IL-TIF, cytokine ZCYTO18 |
| Source | Human Embryonic Kidney cells (HEK293). HEK293-derived IL-22 protein |

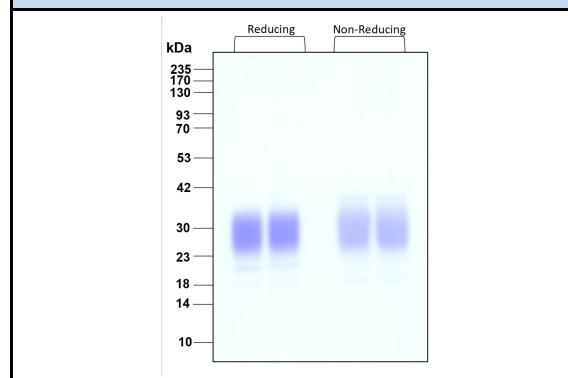
Specifications

| Test | Method | Specification |
|----------------|---|---|
| Activity | Dose-dependent release of IL-10 from the Colo 205 (Human Colon Cancer) cell line. | 0.01-0.18 ng/mL in reporter cell line, 0.045-0.225 ng/mL in Colo205 cell line |
| Molecular Mass | SDS-PAGE | 25-40 kDa reduced and non-reduced, dimer, glycosylated |
| Purity | SDS-PAGE | > 95% |
| Endotoxin | LAL | <1.0 EU/ µg |

Activity Data



SDS-PAGE



www.ptglab.com

Document #: FR-QA118-101 Rev 0
Data Sheet Version #:

Proteintech Group, Inc.

5500 Pearl Street, Suite 400 Rosemont, IL 60012
t: 1-888-478-4522; f: 1-312-455-8408
Email: proteintech@ptglab.com

| Preparation | |
|----------------------|--|
| Shipping Temperature | ambient temperature |
| Formulation | 1x PBS, See Certificate of Analysis for details |
| Reconstitution | Briefly centrifuge the vial before opening. It is recommended to reconstitute the protein to 0.2 mg/mL in sterile 1x PBS pH 7.4 containing 0.1% endotoxin-free recombinant human serum albumin (HSA). Gently swirl or tap vial to mix. |

| Stability and Storage | Product Form | Temperature Conditions | Storage Time (From Date of Receipt) |
|------------------------------------|---------------------------|------------------------|--|
| | Lyophilized | -20°C to -80°C | Until Expiry Date |
| | Lyophilized | Room Temperature | 2 weeks |
| | Reconstituted as per CofA | -20°C to -80°C | 6 months |
| | Reconstituted as per CofA | 4°C | 1 week |
| Avoid repeated freeze-thaw cycles. | | | |

www.ptglab.com

Document #: FR-QA118-101 Rev 0
Data Sheet Version #:

Proteintech Group, Inc.
5500 Pearl Street, Suite 400 Rosemont, IL 60612
t: 1-888-478-4522; f: 1-312-455-8408
Email: proteintech@ptglab.com