

# HRP-conjugated Lamin B1

## Monoclonal antibody

Catalog Number: HRP-66095

Featured Product

### Basic Information

## Catalog Number:

HRP-66095

## Size:

1000 µg/ml

## Source:

Mouse

## Isotype:

IgG1

## Immunogen Catalog Number:

AG20522

## GenBank Accession Number:

BC012295

## GeneID (NCBI):

4001

## ENSEMBL Gene ID:

ENSG00000113368

## UNIPROT ID:

P20700

## Full Name:

lamin B1

## Calculated MW:

66 kDa

## Observed MW:

66-70 kDa

## Purification Method:

Protein G purification

## CloneNo.:

3C10G12

## Recommended Dilutions:

WB 1:20000-1:100000

### Applications

## Tested Applications:

WB

## Species Specificity:

human, mouse, rat

## Positive Controls:

WB : HeLa cells, PC-12 cells

### Background Information

Lamins are components of the nuclear lamina, a fibrous layer on the nucleoplasmic side of the inner nuclear membrane, which is thought to provide a framework for the nuclear envelope and may also interact with chromatin. The nuclear lamina consists of a two-dimensional matrix of proteins located next to the inner nuclear membrane. The lamin family of proteins make up the matrix and are highly conserved in evolution. During mitosis, the lamina matrix is reversibly disassembled as the lamin proteins are phosphorylated. Vertebrate lamins consist of two types, A and B. This gene encodes one of the two B type proteins, B1. This protein is not suitable for samples where the nuclear envelope has been removed.

### Storage

## Storage:

Store at -20°C. Avoid exposure to light. Stable for one year after shipment.

## Storage Buffer:

PBS with 50% Glycerol, 0.05% Proclin300, 0.5% BSA, pH 7.3.

Aliquoting is unnecessary for -20°C storage

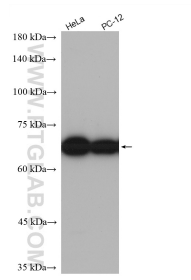
For technical support and original validation data for this product please contact:

T: 4006900926

E: [Proteintech-CN@ptglab.com](mailto:Proteintech-CN@ptglab.com)W: [ptgcn.com](http://ptgcn.com)

This product is exclusively available under Proteintech Group brand and is not available to purchase from any other manufacturer.

## Selected Validation Data



Various lysates were subjected to SDS PAGE followed by western blot with HRP-66095 (Lamin B1 antibody) at dilution of 1:100000 incubated at room temperature for 1.5 hours.