

For Research Use Only

FITC-conjugated HBE1-Specific Monoclonal antibody

Catalog Number: FITC-66151



Basic Information

Catalog Number:

FITC-66151

Concentration:

500 µg/ml

Source:

Mouse

Isotype:

IgG1

GenBank Accession Number:

NM_005330

GeneID (NCBI):

3046

UNIPROT ID:

P02100

Full Name:

hemoglobin, epsilon 1

Observed MW:

16 kDa

Purification Method:

Protein G purification

CloneNo.:

2C11G6

Recommended Dilutions:

FC (Intra): 0.40 µg per 10⁶ cells in a 100 µl suspension

FC: 0.40 µg per 10⁶ cells in a 100 µl suspension

Excitation/Emission maxima wavelengths:

498 nm / 526 nm

Applications

Tested Applications:

FC (Intra)

Species Specificity:

human

Positive Controls:

FC (Intra) : K-562 cells,

FC : K-562 cells,

Background Information

The hemoglobin molecule is a tetramer consisting of two α -globin-like polypeptide chains and two β -globin-like chains. The human hemoglobin genes are expressed in a tightly developmentally controlled fashion. ϵ -globin (HBE1) is the predominantly expressed gene during the embryonic stage. The epsilon hemoglobin chain seems to be the best marker for fetal nucleated red blood cells (NRBCs). Anti-HBE1 may be used to label and isolate fetal cells from maternal blood and can be useful in prenatal diagnosis. This antibody specifically recognizes the HBE1 and doesn't cross-react with other globin chains. This antibody is conjugated with FITC.

Storage

Storage:

Store at -20°C. Avoid exposure to light. Stable for one year after shipment.

Storage Buffer:

PBS with 50% glycerol, 0.05% Proclin300, 0.5% BSA, pH7.3

Aliquoting is unnecessary for -20°C storage

For technical support and original validation data for this product please contact:

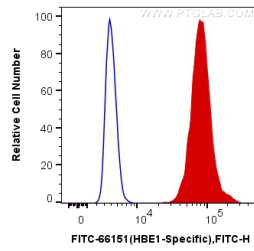
T: 4006900926

E: Proteintech-CN@ptglab.com

W: ptgcn.com

This product is exclusively available under Proteintech Group brand and is not available to purchase from any other manufacturer.

Selected Validation Data



1X10⁶ K-562 cells were intracellularly stained with 0.4 ug FITC Anti-Human HBE1-Specific (FITC-66151, Clone:2C11G6) (red), or 0.4 ug Control Antibody. Cells were fixed with 4% PFA and permeabilized with Flow Cytometry Perm Buffer (PF00011-C).