

For Research Use Only

# FITC Plus Anti-Human CD16 (3G8)

Catalog Number: FITC-65090



## Basic Information

<b>Catalog Number:</b> FITC-65090	<b>GenBank Accession Number:</b> BC017865	<b>Purification Method:</b> Affinity purification
<b>Concentration:</b> 100 tests, 5 µl/test	<b>GeneID (NCBI):</b> 2214	<b>CloneNo.:</b> 3G8
<b>Source:</b> Mouse	<b>ENSEMBL Gene ID:</b> ENSG00000203747	<b>Recommended Dilutions:</b> FC: 5 µl per 10 <sup>6</sup> cells in 100 µl suspension
<b>Isotype:</b> IgG1, kappa	<b>Full Name:</b> Fc fragment of IgG, low affinity IIIa, receptor (CD16a)	<b>Excitation/Emission maxima wavelengths:</b> 495 nm / 524 nm
	<b>Calculated MW:</b> 254 aa, 29 kDa	

## Applications

<b>Tested Applications:</b> FC	<b>Positive Controls:</b> FC : human PBMCs,
<b>Species Specificity:</b> human	

## Background Information

CD16 is a 50-70-kDa low affinity Fc receptor found on the surface of natural killer cells, neutrophil polymorphonuclear leukocytes, monocytes and macrophages. CD16 mediates antibody-dependent cellular cytotoxicity (ADCC) and other antibody-dependent responses, such as phagocytosis. CD16 has been identified as Fc receptors Fc  $\gamma$  RIIIa (CD16a) and Fc  $\gamma$  RIIIb (CD16b), encoded by two nearly identical genes, FCGR3A and the FCGR3B. Clone 3G8 recognizes both the CD16a and CD16b (PMID: 7592758).

## Storage

**Storage:**  
Store at 2-8°C. Avoid exposure to light. Stable for one year after shipment.  
**Storage Buffer:**  
PBS with 0.09% sodium azide and 0.5% BSA, pH7.3

For technical support and original validation data for this product please contact:

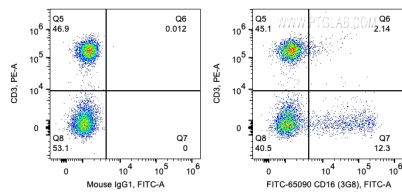
T: 4006900926

E: [Proteintech-CN@ptglab.com](mailto:Proteintech-CN@ptglab.com)

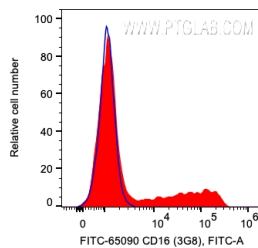
W: [ptgcn.com](http://ptgcn.com)

This product is exclusively available under Proteintech Group brand and is not available to purchase from any other manufacturer.

## Selected Validation Data



1X10<sup>6</sup> human PBMCs were surface co-stained with PE Anti-Human CD3 and 5 ul FITC Plus Anti-Human CD16 (FITC-65090, Clone:3G8) or Mouse IgG1 Isotype Control. Cells were not fixed. Lymphocytes were gated.



1X10<sup>6</sup> human PBMCs were surface co-stained with PE Anti-Human CD3 and 5 ul FITC Plus Anti-Human CD16 (FITC-65090, Clone:3G8) or Mouse IgG1 Isotype Control. Cells were not fixed. CD3-lymphocytes were gated.