

# Cardinal Red™ Anti-Human CD44 (F10-44-2)

Catalog Number: CR-65063

## Basic Information

**Catalog Number:**

CR-65063

**Concentration:**

100 tests, 5 µl/test

**Source:**

Mouse

**Isotype:**

IgG2a, kappa

**GenBank Accession Number:**

BC004372

**GeneID (NCBI):**

960

**ENSEMBL Gene ID:**

ENSG00000026508

**UNIPROT ID:**

P16070

**Full Name:**

CD44 molecule (Indian blood group)

**Calculated MW:**

742 aa, 82 kDa

**Purification Method:**

Affinity purification

**CloneNo.:**

F10-44-2

**Recommended Dilutions:**FC: 5 µl per 10<sup>6</sup> cells in 100 µl suspension**Excitation/Emission maxima wavelengths:**

592 nm / 611 nm

## Applications

**Tested Applications:**

FC

**Species Specificity:**

Human

**Positive Controls:**

FC : human PBMCs,

## Background Information

CD44 is a type I transmembrane glycoprotein expressed on embryonic stem cells and in various levels on other cell types including connective tissues and bone marrow. CD44 expression is also upregulated in subpopulations of cancer cells and is recognized as a molecular marker for cancer stem cells (PMID: 29747682). It is a cell-surface receptor that mediates cell-cell and cell-matrix interactions through its affinity for hyaluronic acid (HA) and possibly also through its affinity for other ligands (PMID: 10694938). Adhesion with HA plays an important role in cell migration, tumor growth and progression. CD44 is also involved in lymphocyte activation, recirculation and homing, and in hematopoiesis.

## Storage

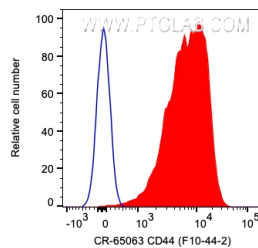
**Storage:**

Store at 2-8°C. Avoid exposure to light. Stable for one year after shipment.

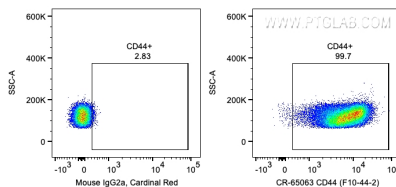
**Storage Buffer:**

PBS with 0.09% sodium azide and 0.5% BSA, pH7.3

## Selected Validation Data



1X10<sup>6</sup> human PBMCs were surface stained with 5 ul Cardinal Red™ Anti-Human CD44 (CR-65063, Clone:F10-44-2) or Mouse IgG2a Isotype Control. Cells were not fixed. Lymphocytes were gated.



1X10<sup>6</sup> human PBMCs were surface stained with 5 ul Cardinal Red™ Anti-Human CD44 (CR-65063, Clone:F10-44-2) or Mouse IgG2a Isotype Control. Cells were not fixed. Lymphocytes were gated.