

For Research Use Only

# CoraLite® Plus 750 Mouse IgG2b isotype control (11B8C4)

Catalog Number: CL750-66360-3



## Basic Information

Catalog Number:

CL750-66360-3

Concentration:

100ug, 0.2 mg/mL

Source:

Mouse

Isotype:

IgG2b

GenBank Accession Number:

GeneID (NCBI):

Full Name:

Purification Method:

Protein A purification

CloneNo.:

11B8C4

Recommended Dilutions:

FC: 0.2 ug per 10<sup>6</sup> cells in 100 µL suspension

Excitation/Emission maxima wavelengths:

755 nm / 780 nm

## Applications

Tested Applications:

FC

Species Specificity:

megathura crenulata

Positive Controls:

FC : ,

## Background Information

This antibody is used as the isotype control of mouse IgG2b. It can be used as the isotype control in Flow Cytometry, Immuno-Precipitation and other experiments. The immunogen of this antibody is Keyhole Limpet Hemocyanin (KLH).

## Storage

Storage:

Store at 2-8°C. Avoid exposure to light. Stable for one year after shipment.

Storage Buffer:

PBS with 0.09% sodium azide and 0.5% BSA, pH7.3

For technical support and original validation data for this product please contact:

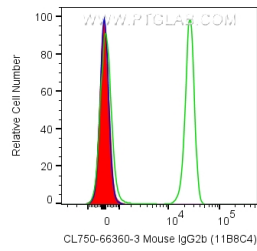
T: 4006900926

E: [Proteintech-CN@ptglab.com](mailto:Proteintech-CN@ptglab.com)

W: [ptgcn.com](http://ptgcn.com)

This product is exclusively available under Proteintech Group brand and is not available to purchase from any other manufacturer.

## Selected Validation Data



1X10<sup>6</sup> human PBMCs were surface stained with 0.2 ug CoraLite® Plus 750 Anti-Mouse IgG2b isotype control (CL750-66360-3, Clone:11B8C4) (red), or CoraLite® Plus 750 Anti-Human CD4 (OKT4) (green), or unstained (blue). Cells were not fixed. Lymphocytes were gated.