

For Research Use Only

# CoraLite® Plus 750-conjugated 6\*His, His-Tag Monoclonal antibody

Catalog Number: CL750-66005



## Basic Information

Catalog Number:

CL750-66005

Concentration:

1000 ug/ml

Source:

Mouse

Isotype:

IgG1

GenBank Accession Number:

GeneID (NCBI):

Full Name:

Calculated MW:

0.84 kDa

Purification Method:

Protein G purification

CloneNo.:

1B7G5

Recommended Dilutions:

WB 1:1000-1:4000

Excitation/Emission maxima wavelengths:

755 nm / 780 nm

## Applications

Tested Applications:

WB

Species Specificity:

recombinant protein

Positive Controls:

WB : Transfected HEK-293T cells,

## Background Information

Protein tags are protein or peptide sequences located either on the C- or N- terminal of the target protein, which facilitates one or several of the following characteristics: solubility, detection, purification, localization and expression. His-tag is often used for affinity purification and binding assays. Expressed His-tagged proteins can be purified and detected easily because the string of histidine residues binds to several types of immobilized metal ions, including nickel, cobalt and copper, under specific buffer conditions. The His-tag antibody is a useful tool for monitoring of the His-tagged proteins, and recognizes His-tags placed at N-terminal, C-terminal, and internal regions of fusion proteins expressed in bacteria, insect, and mammalian cells.

## Storage

Storage:

Store at -20°C. Avoid exposure to light. Stable for one year after shipment.

Storage Buffer:

PBS with 50% glycerol, 0.05% Proclin300, 0.5% BSA, pH7.3

Aliquoting is unnecessary for -20°C storage

For technical support and original validation data for this product please contact:

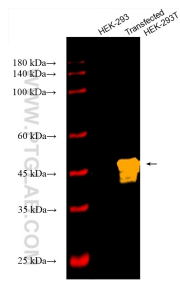
T: 4006900926

E: [Proteintech-CN@ptglab.com](mailto:Proteintech-CN@ptglab.com)

W: [ptgcn.com](http://ptgcn.com)

This product is exclusively available under Proteintech Group brand and is not available to purchase from any other manufacturer.

## Selected Validation Data



Various lysates were subjected to SDS PAGE followed by western blot with CL750-66005 (6<sup>+</sup>His, His-Tag antibody) at dilution of 1:2000 incubated at room temperature for 1.5 hours.