

For Research Use Only

CoraLite® Plus 750-conjugated RB1CC1 Polyclonal antibody

Catalog Number: CL750-17250

Featured Product



Basic Information

Catalog Number:

CL750-17250

Concentration:

1000 ug/ml

Source:

Rabbit

Isotype:

IgG

Immunogen Catalog Number:

AG10508

GenBank Accession Number:

BC017556

GeneID (NCBI):

9821

UNIPROT ID:

Q8TDY2

Full Name:

RB1-inducible coiled-coil 1

Calculated MW:

1594 aa, 183 kDa

Observed MW:

200 kDa

Purification Method:

Antigen affinity purification

Recommended Dilutions:

FC (Intra): 0.80 ug per 10⁶ cells in a 100 µl suspension

Excitation/Emission maxima wavelengths:

755 nm / 780 nm

Applications

Tested Applications:

FC (Intra)

Species Specificity:

human, mouse, rat

Positive Controls:

FC (Intra) : HepG2 cells,

Background Information

RB1CC1, also named as RBICC or FIP200, is implicated in the regulation of RB1 expression and functions as a DNA-binding transcription factor. It is a potent regulator of the RB1 pathway and a mediator that plays a crucial role in muscular differentiation. Its expression is, thus, a prerequisite for myogenic differentiation. Involved in autophagy. RB1CC1 is required for autophagosome formation. It is probably involved in the tumorigenesis of breast cancer. RB1CC1 is frequently mutated in breast cancer and shows characteristics of a classical tumor suppressor gene. This antibody is a rabbit polyclonal antibody raised against residues near the C terminus of human RB1CC1. the calculated molecular weight of RB1CC1 is 180 kDa, but the modified RB1CC1 is about 200 kDa.

Storage

Storage:

Store at -20°C. Avoid exposure to light. Stable for one year after shipment.

Storage Buffer:

PBS with 50% glycerol, 0.05% Proclin300, 0.5% BSA, pH7.3

Aliquoting is unnecessary for -20°C storage

For technical support and original validation data for this product please contact:

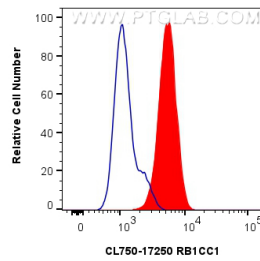
T: 4006900926

E: Proteintech-CN@ptglab.com

W: ptgcn.com

This product is exclusively available under Proteintech Group brand and is not available to purchase from any other manufacturer.

Selected Validation Data



1X10⁶ HepG2 cells were intracellularly stained with 0.8 ug CoraLite® Plus 750 Anti-Human RB1CC1 (CL750-17250) (red), or 0.8 ug Isotype Control. Cells were fixed with 4% PFA and permeabilized with Flow Cytometry Perm Buffer (PF00011-C).