

# CoraLite® Plus 647-conjugated Cytokeratin 18 Monoclonal antibody

Catalog Number: CL647-66187

## Basic Information

**Catalog Number:**

CL647-66187

**Concentration:**

1000 µg/ml

**Source:**

Mouse

**Isotype:**

IgG1

**Immunogen Catalog Number:**

AG1260

**GenBank Accession Number:**

BC000180

**GeneID (NCBI):**

3875

**UNIPROT ID:**

P05783

**Full Name:**

keratin 18

**Calculated MW:**

48 kDa

**Observed MW:**

48 kDa

**Purification Method:**

Protein A purification

**CloneNo.:**

1G11C4

**Recommended Dilutions:**

IF/ICC: 1:50-1:500

FC (Intra): 0.80 µg per 10<sup>6</sup> cells in a 100 µl suspension

FC: 0.80 µg per 10<sup>6</sup> cells in a 100 µl suspension

**Excitation/Emission maxima wavelengths:**

654 nm / 674 nm

## Applications

**Tested Applications:**

IF/ICC, FC (Intra)

**Species Specificity:**

human, mouse, rat

**Positive Controls:**

IF/ICC : HepG2 cells,

FC (Intra) : HeLa cells,

FC : HeLa cells,

## Background Information

Keratins are a large family of proteins that form the intermediate filament cytoskeleton of epithelial cells, which are classified into two major sequence types. Type I keratins are a group of acidic intermediate filament proteins, including K9-K23, and the hair keratins Ha1-Ha8. Type II keratins are the basic or neutral counterparts to the acidic type I keratins, including K1-K8, and the hair keratins, Hb1-Hb6. KRT18, also named as CYK18, PIG46 and K18, is the most commonly found members of the intermediate filament gene family. KRT18 is a type I keratin which is found primarily in non squamous epithelia and is present in a majority of adenocarcinomas and ductal carcinomas but not in squamous cell carcinomas.

## Storage

**Storage:**

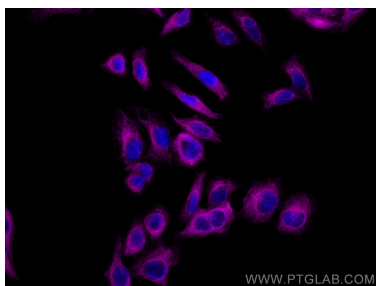
Store at -20°C. Avoid exposure to light. Stable for one year after shipment.

**Storage Buffer:**

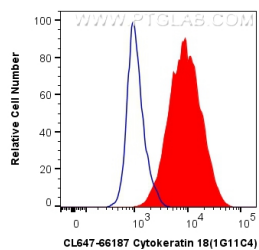
PBS with 50% glycerol, 0.05% Proclin300, 0.5% BSA, pH7.3

Aliquoting is unnecessary for -20°C storage

## Selected Validation Data



Immunofluorescent analysis of (-20°C Methanol) fixed HepG2 cells using CoraLite® Plus 647 Cytokeratin 18 antibody (CL647-66187, Clone: 1G11C4) at dilution of 1:200.



1X10<sup>6</sup> HeLa cells were intracellularly stained with 0.8 ug CoraLite® Plus 647 Anti-Human Cytokeratin 18 (CL647-66187, Clone:1G11C4) (red), or 0.8 ug Isotype Control. Cells were fixed with 4% PFA and permeabilized with Flow Cytometry Perm Buffer (PF00011-C).