

For Research Use Only

# CoraLite® Plus 647-conjugated GFP tag Monoclonal antibody

Catalog Number: CL647-66002



## Basic Information

Catalog Number:

CL647-66002

Concentration:

1000 ug/ml

Source:

Mouse

Isotype:

IgG2a

Immunogen Catalog Number:

AG2128

GenBank Accession Number:

M62653

GeneID (NCBI):

Full Name:

Calculated MW:

26 kDa

Purification Method:

Protein A purification

CloneNo.:

1E10H7

Recommended Dilutions:

IF/ICC: 1:50-1:500

FC (Intra): 0.4 ug per 10<sup>6</sup> cells in a  
100 µl suspension

Excitation/Emission maxima  
wavelengths:

654 nm / 674 nm

## Applications

Tested Applications:

IF/ICC, FC (Intra)

Species Specificity:

recombinant protein

Positive Controls:

IF/ICC : Transfected HEK-293 cells,

FC (Intra) : Transfected HEK-293T cells,

## Background Information

Green Fluorescent Proteins (GFPs) encompass a diverse range of proteins carrying a green chromophore, originating from various species and forming different protein lineages. Wildtype GFP consists of 238 amino acid residues (26.9 kDa). GFP was first identified in the jellyfish *Aequorea victoria*. It emits green light with a peak wavelength of 509 nm upon excitation by blue light at 395 nm. When fused with other proteins, GFP serves as a versatile reporter protein e.g. for quantifying expression levels or facilitates visualization of subcellular localization through fluorescence microscopy. This antibody is a mouse (IgG2a) monoclonal antibody against GFP reactive to GFP, eGFP, eYFP, YFP and CFP. This antibody is labeled with CoraLite Plus 647.

## Storage

Storage:

Store at -20°C. Avoid exposure to light. Stable for one year after shipment.

Storage Buffer:

PBS with 50% glycerol, 0.05% Proclin300, 0.5% BSA, pH7.3

Aliquoting is unnecessary for -20°C storage

For technical support and original validation data for this product please contact:

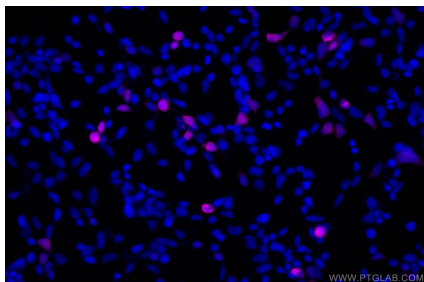
T: 4006900926

E: [Proteintech-CN@ptglab.com](mailto:Proteintech-CN@ptglab.com)

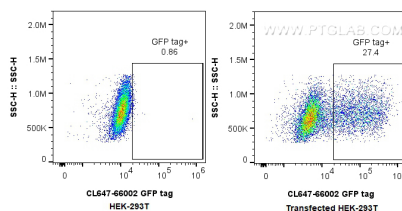
W: [ptgcn.com](http://ptgcn.com)

This product is exclusively available under Proteintech Group brand and is not available to purchase from any other manufacturer.

## Selected Validation Data



Immunofluorescent analysis of (-20°C Ethanol) fixed Transfected HEK-293 cells using CoraLite® Plus 647 GFP tag antibody (CL647-66002, Clone: 1E10H7 ) at dilution of 1:200.



1x10<sup>6</sup> Transfected HEK-293T cells were intracellularly stained with 0.4 ug CoraLite® Plus 647-conjugated GFP tag Monoclonal antibody (CL647-66002, Clone:1E10H7), and 0.4 ug CoraLite® Plus 647 Mouse IgG2a isotype control (11A1B2) (CL647-66360-2, Clone: 11A1B2). Cells were fixed with 4% PFA and permeabilized with Flow Cytometry Perm Buffer (PF00011-C).