

For Research Use Only

CoraLite® Plus 647 Anti-Human CD80 (2D10.4)

Catalog Number: CL647-65083



Basic Information

Catalog Number:

CL647-65083

Concentration:

100 tests, 5 µl/test

Source:

Mouse

Isotype:

IgG1, kappa

GenBank Accession Number:

BC042665

GeneID (NCBI):

941

Full Name:

CD80 molecule

Calculated MW:

33 kDa

Purification Method:

Affinity purification

CloneNo.:

2D10.4

Recommended Dilutions:

FC: 5 µl per 10⁶ cells in 100 µl suspension

Excitation/Emission maximum wavelengths:

654 nm / 674 nm

Applications

Tested Applications:

FC

Species Specificity:

human

Positive Controls:

FC : Daudi cells, IFN-γ and LPS-stimulated THP-1-derived macrophages

Background Information

CD80 (also known as B7-1) is a type I membrane protein that is a member of the immunoglobulin superfamily, with an extracellular immunoglobulin constant-like domain and a variable-like domain required for receptor binding. It is expressed on antigen-presenting cells (APCs), including B cells, dendritic cells, monocytes, and macrophages. CD80 is the receptor for the proteins CD28 and CTLA-4 found on the surface of T-cells. It is involved in the costimulatory signal essential for T-lymphocyte activation. T-cell proliferation and cytokine production is induced by the binding of CD28, binding to CTLA-4 has opposite effects and inhibits T-cell activation. CD80 also acts as a cellular attachment receptor for adenovirus subgroup B. (PMID: 7545666; 12015893; 16920215)

Storage

Storage:

Store at 2-8°C. Avoid exposure to light. Stable for one year after shipment.

Storage Buffer:

PBS with 0.09% sodium azide and 0.5% BSA, pH7.3

For technical support and original validation data for this product please contact:

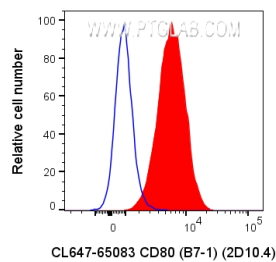
T: 4006900926

E: Proteintech-CN@ptglab.com

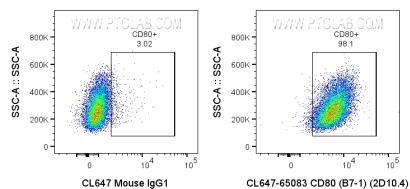
W: ptgcn.com

This product is exclusively available under Proteintech Group brand and is not available to purchase from any other manufacturer.

Selected Validation Data



1x10⁶ Daudi cells were surface stained with 5 ul CoraLite® Plus 647 Anti-Human CD80 (B7-1) (CL647-65083, Clone: 2D10.4), or CoraLite® Plus 647 Mouse IgG1 Isotype Control. Cells were not fixed.



1x10⁶ Daudi cells were surface stained with 5 ul CoraLite® Plus 647 Anti-Human CD80 (B7-1) (CL647-65083, Clone: 2D10.4), or CoraLite® Plus 647 Mouse IgG1 Isotype Control. Cells were not fixed.