

For Research Use Only

# CoraLite® Plus 647 Anti-Mouse CD3 (17A2)

Catalog Number: CL647-65077

1 Publications



## Basic Information

Catalog Number:

CL647-65077

Concentration:

100ug, 0.5 mg/ml

Source:

Rat

Isotype:

IgG2b, kappa

GenBank Accession Number:

BC098236

GeneID (NCBI):

12501

UNIPROT ID:

P22646

Full Name:

CD3 antigen, epsilon polypeptide

Purification Method:

Affinity purification

CloneNo.:

17A2

Recommended Dilutions:

IF/ICC: 1:250-1:1000

FC: 0.5 ug per 10<sup>6</sup> cells in 100 µl suspension

Excitation/Emission maxima wavelengths:

654 nm / 674 nm

## Applications

Tested Applications:

IF/ICC, FC

Species Specificity:

Mouse

Cited Species:

mouse

Positive Controls:

IF/ICC : mouse splenocytes,

FC : mouse splenocytes,

## Background Information

CD3 is a multimeric protein associated with the T-cell receptor (TCR) to form a complex involved in antigen recognition and signal transduction (PMID: 15885124). CD3 is composed of CD3  $\gamma$ ,  $\delta$ ,  $\epsilon$ , and  $\zeta$  chains (PMID: 1826255). It is expressed by thymocytes in a developmentally regulated manner, T cells, and some NK cells (PMID: 3289580). The TCR recognizes antigens bound to major histocompatibility complex (MHC) molecules. TCR-mediated peptide-MHC recognition is transmitted to the CD3 complex, leading to the intracellular signal transduction (PMID: 11985657).

## Notable Publications

Author	Pubmed ID	Journal	Application
Mengdi Yang	39255734	Biomed Pharmacother	

## Storage

Storage:

Store at 2-8°C. Avoid exposure to light. Stable for one year after shipment.

Storage Buffer:

PBS with 0.09% sodium azide and 0.5% BSA, pH7.3

For technical support and original validation data for this product please contact:

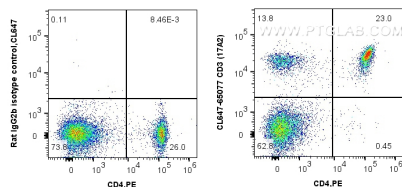
T: 4006900926

E: Proteintech-CN@ptglab.com

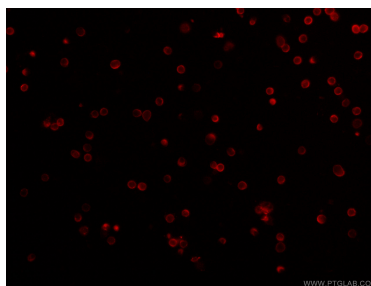
W: ptgcn.com

This product is exclusively available under Proteintech Group brand and is not available to purchase from any other manufacturer.

## Selected Validation Data



1X10<sup>6</sup> C57BL/6 mouse splenocytes were surface co-stained with PE Anti-Mouse CD4 (GK1.5) and 0.5 ug CoraLite® Plus 647 Anti-Mouse CD3 (CL647-65077, Clone:17A2) or 0.5 ug CoraLite® Plus 647 Rat IgG2b Isotype Control (LTF-2) (CL647-65211, Clone: LTF-2). Cells were not fixed.



Immunofluorescent analysis of mouse splenocytes using CoraLite® Plus 647-conjugated Anti-Mouse CD3 (CL647-65077, Clone: 17A2) at dilution of 1:500.