

For Research Use Only

# CoraLite® Plus 647 Anti-Mouse CD16/CD32 (93)

Catalog Number: CL647-65057



## Basic Information

Catalog Number:

CL647-65057

Concentration:

100ug, 500 µg/ml

Source:

Rat

Isotype:

IgG2a, lambda

GenBank Accession Number:

BC038070

GeneID (NCBI):

14130

UNIPROT ID:

P08101

Full Name:

Fc receptor, IgG, low affinity IIb

Purification Method:

Affinity purification

CloneNo.:

93

Recommended Dilutions:

IF/ICC: 1:50-1:500

FC: 0.5 ug per 10<sup>6</sup> cells in 100 µl suspension

Excitation/Emission maxima wavelengths:

654 nm / 674 nm

## Applications

Tested Applications:

IF/ICC, FC

Species Specificity:

mouse

Positive Controls:

IF/ICC : mouse splenocytes,

FC : mouse splenocytes,

## Background Information

CD16 (FcγRIII) is a 50-70 kDa low affinity Fc receptor found on the surface of natural killer cells, neutrophil polymorphonuclear leukocytes, monocytes and macrophages. CD16 mediates antibody-dependent cellular cytotoxicity (ADCC) and other antibody-dependent responses, such as phagocytosis. CD32 (FcγRII) is a 40 kD transmembrane glycoprotein that binds to the Fc region of IgG with low affinity. CD32 is present on phagocytic cells such as macrophages and neutrophils, and is involved in the process of phagocytosis and clearing of immune complexes.

## Storage

Storage:

Store at 2-8°C. Avoid exposure to light. Stable for one year after shipment.

Storage Buffer:

PBS with 0.09% sodium azide and 0.5% BSA, pH7.3

For technical support and original validation data for this product please contact:

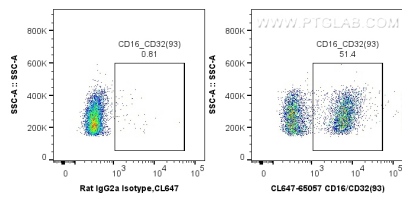
T: 4006900926

E: [Proteintech-CN@ptglab.com](mailto:Proteintech-CN@ptglab.com)

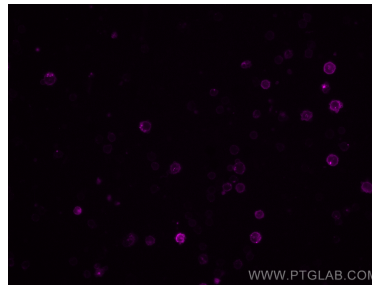
W: [ptgcn.com](http://ptgcn.com)

This product is exclusively available under Proteintech Group brand and is not available to purchase from any other manufacturer.

## Selected Validation Data



1X10<sup>6</sup> mouse splenocytes were surface stained with 0.5 ug CoraLite® Plus 647 Anti-Mouse CD16/32 (CL647-65057, Clone:93), or 0.5 ug Control Antibody. Cells were not fixed.



Immunofluorescent analysis of mouse splenocytes using CoraLite® Plus 647 CD16/32 antibody (CL647-65057, Clone: 93 ) at dilution of 1:100.