

For Research Use Only

# CoraLite® Plus 647-conjugated BCL2 Monoclonal antibody

Catalog Number: CL647-60178

Featured Product



## Basic Information

Catalog Number:

CL647-60178

Concentration:

1000 µg/ml

Source:

Mouse

Isotype:

IgG2b

Immunogen Catalog Number:

AG3508

GenBank Accession Number:

BC027258

GeneID (NCBI):

596

UNIPROT ID:

P10415

Full Name:

B-cell CLL/lymphoma 2

Calculated MW:

26 kDa

Observed MW:

26 kDa

Purification Method:

Protein A purification

CloneNo.:

4H8C6

Recommended Dilutions:

IF/ICC: 1:50-1:500

FC (Intra): 0.40 µg per 10<sup>6</sup> cells in a 100 µl suspension

Excitation/Emission maxima wavelengths:

654 nm / 674 nm

## Applications

Tested Applications:

IF/ICC, FC (Intra)

Species Specificity:

human, pig

Positive Controls:

IF/ICC : MCF-7 cells, HeLa cells

FC (Intra) : human peripheral blood lymphocytes,

## Background Information

BCL2 belongs to the Bcl-2 family. It suppresses apoptosis in a variety of cell systems including factor-dependent lymphohematopoietic and neural cells. BCL2 regulates cell death by controlling the mitochondrial membrane permeability. It appears to function in a feedback loop system with caspases. BCL2 inhibits caspase activity either by preventing the release of cytochrome c from the mitochondria and/or by binding to the apoptosis-activating factor (APAF-1).

## Storage

Storage:

Store at -20°C. Avoid exposure to light. Stable for one year after shipment.

Storage Buffer:

PBS with 50% glycerol, 0.05% Proclin300, 0.5% BSA, pH7.3

Aliquoting is unnecessary for -20°C storage

For technical support and original validation data for this product please contact:

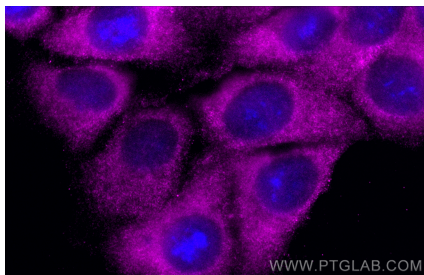
T: 4006900926

E: [Proteintech-CN@ptglab.com](mailto:Proteintech-CN@ptglab.com)

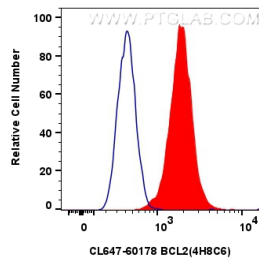
W: [ptgcn.com](http://ptgcn.com)

This product is exclusively available under Proteintech Group brand and is not available to purchase from any other manufacturer.

## Selected Validation Data



Immunofluorescent analysis of (-20°C Methanol) fixed MCF-7 cells using CoraLite® Plus 647 BCL2 antibody (CL647-60178, Clone: 4H8C6) at dilution of 1:200.



1x10<sup>6</sup> human peripheral blood lymphocytes were intracellularly stained with 0.4 ug CoraLite® Plus 647-conjugated BCL2 Monoclonal antibody (CL647-60178, Clone:4H8C6)(red), or 0.4 ug CoraLite® Plus 647 Mouse IgG2b Isotype Control (MPC-11) (CL647-65128, Clone: MPC-11) (blue). Cells were fixed with 4% PFA and permeabilized with Flow Cytometry Perm Buffer (PF00011-C).