

For Research Use Only



# CoraLite® Plus 647-conjugated Hemoglobin Epsilon Polyclonal antibody

Catalog Number: **CL647-12361**

## Basic Information

Catalog Number:

CL647-12361

Concentration:

1000 ug/ml

Source:

Rabbit

Isotype:

IgG

Immunogen Catalog Number:

AG3026

GenBank Accession Number:

BC015537

GeneID (NCBI):

3046

UNIPROT ID:

P02100

Full Name:

hemoglobin, epsilon 1

Calculated MW:

147 aa, 16 kDa

Observed MW:

12-16 kDa

Purification Method:

Antigen affinity purification

Recommended Dilutions:

IF-P: 1:50-1:500

FC (Intra): 0.80 ug per 10<sup>6</sup> cells in a 100 µl suspension

Excitation/Emission maxima wavelengths:

654 nm / 674 nm

## Applications

Tested Applications:

IF-P, FC (Intra)

Species Specificity:

human, mouse, rat

Positive Controls:

IF-P: human placenta tissue,

FC (Intra): K-562 cells,

## Background Information

The hemoglobin molecule is a tetramer consisting of two alpha- and two beta-globin-like chains. HBE1 (hemoglobin epsilon chain) is a beta-type chain of hemoglobin predominantly expressed during the embryonic stage (21321359). The HBE1 has been regarded as the best marker for fetal nucleated red blood cells (NRBCs). This antibody can be used to label and isolate fetal cells from maternal blood and may be useful in prenatal diagnosis (15906407).

## Storage

Storage:

Store at -20°C. Avoid exposure to light. Stable for one year after shipment.

Storage Buffer:

PBS with 50% glycerol, 0.05% Proclin300, 0.5% BSA, pH7.3

Aliquoting is unnecessary for -20°C storage

For technical support and original validation data for this product please contact:

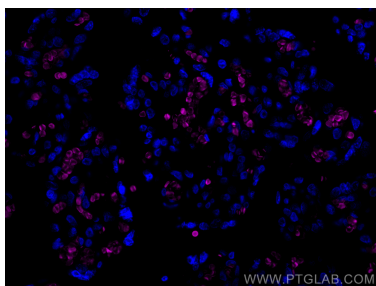
T: 4006900926

E: [Proteintech-CN@ptglab.com](mailto:Proteintech-CN@ptglab.com)

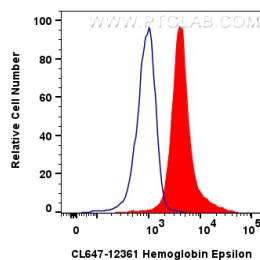
W: [ptgcn.com](http://ptgcn.com)

This product is exclusively available under Proteintech Group brand and is not available to purchase from any other manufacturer.

## Selected Validation Data



Immunofluorescent analysis of (4% PFA) fixed paraffin-embedded human placenta tissue using CoraLite® Plus 647 Hemoglobin Epsilon antibody (CL647-12361) at dilution of 1:200. Heat mediated antigen retrieval with Tris-EDTA buffer (pH 9.0).



$1 \times 10^6$  K-562 cells were intracellularly stained with 0.8  $\mu$ g CoraLite® Plus 647 Anti-Human Hemoglobin Epsilon (CL647-12361)(red), or 0.8  $\mu$ g CoraLite® Plus 647-conjugated Rabbit IgG control Rabbit PolyAb (CL647-30000) (blue). Cells were fixed with 4% PFA and permeabilized with Flow Cytometry Perm Buffer (PF00011-C).